

# HPLC Application

ID No.: 16388

## Polar Bases on Luna 5 $\mu$ m HILIC

**Column:** Luna<sup>®</sup> 5  $\mu$ m HILIC 200 Å, LC Column 150 x 4.6 mm, Ea

**Dimensions:** 150 x 4.6 mm ID

**Order No:** 00F-4450-E0

**Elution Type:** Isocratic

**Eluent A:** Acetonitrile

**Eluent B:** 100mM Ammonium Formate, pH 3.2

Gradient Profile:	Step No.	Time (min)	Pct A	Pct B
	1	0	90	10

**Flow Rate:** 1 mL/min

**Col. Temp.:** ambient

**Detection:** UV-Vis Abs.-Variable Wave.(UV) @ 260 nm (ambient)

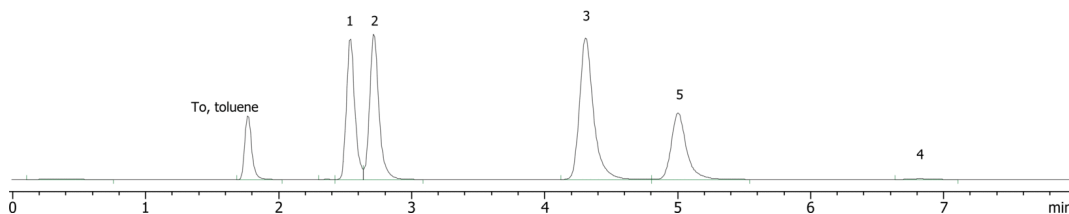
**Detector Info:** competitor comparison

**Analyst Note:** The pH of the aqueous buffer is specified. The pH in mixed organic was not measured.

16388



Products used in this application:



### ANALYTES:

- 1 Thymine
- 2 Uracil
- 3 Adenine
- 4 Guanine
- 5 Cytosine

