

GC Application

ID No.: 16410

Phenols ZB-5msi

Column: Zebtron™ ZB-5MSi, GC Cap. Column 30 m x 0.25 mm x 0.25 μm, Ea

Phase: 5% Phenyl 95% Dimethylpolysiloxane

Dimensions: 30 meters x 0.25 mm x 0.25 μm

Order No: 7HG-G018-11

Oven Profile: 60 °C to 140 °C @ 5 °C/min to 280 °C @ 10 °C/min.

Carrier Gas: Constant Flow Helium, 1.2 mL/min

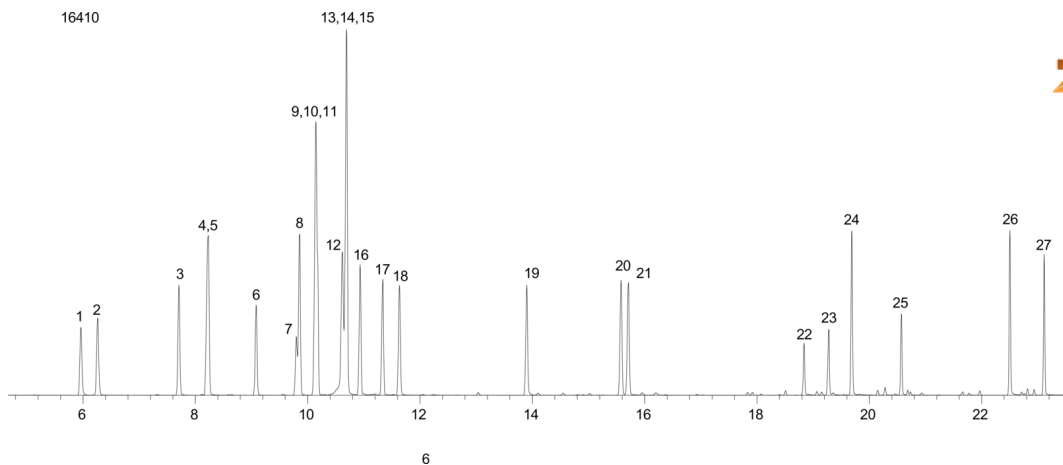
Injection: Split 5:1 1 μL @ 240°C

Detection: Mass Selective (MSD) (230°C)

Analyst Note: 50ppm in dichloromethane



Products used in this application:



Phenols ZB-5msi

ANALYTES:

- 1 Phenol
- 2 2-Chlorophenol
- 3 2-Methylphenol
- 4 4-Methylphenol
- 5 3-Methylphenol
- 6 2,6-Dimethylphenol
- 7 2-Nitrophenol
- 8 2-Ethylphenol
- 9 2,4-Dimethylphenol
- 10 3,5-Dimethylphenol
- 11 2,5-Dimethylphenol
- 12 4-Ethylphenol
- 13 3-Ethylphenol
- 14 2,4-Dichlorophenol
- 15 Benzoic acid
- 16 2,3-Dimethylphenol
- 17 3,4-Dimethylphenol
- 18 2,6-Dichlorophenol
- 19 4-Chloro-3-methylphenol
- 20 2,4,6-Trichlorophenol
- 21 2,4,5-Trichlorophenol
- 22 2,4-Dinitrophenol
- 23 4-Nitrophenol
- 24 2,3,4,6-Tetrachlorophenol
- 25 4,6-Dinitro-2-methylphenol
- 26 Pentachlorophenol
- 27 Dinoseb

