

# GC Application

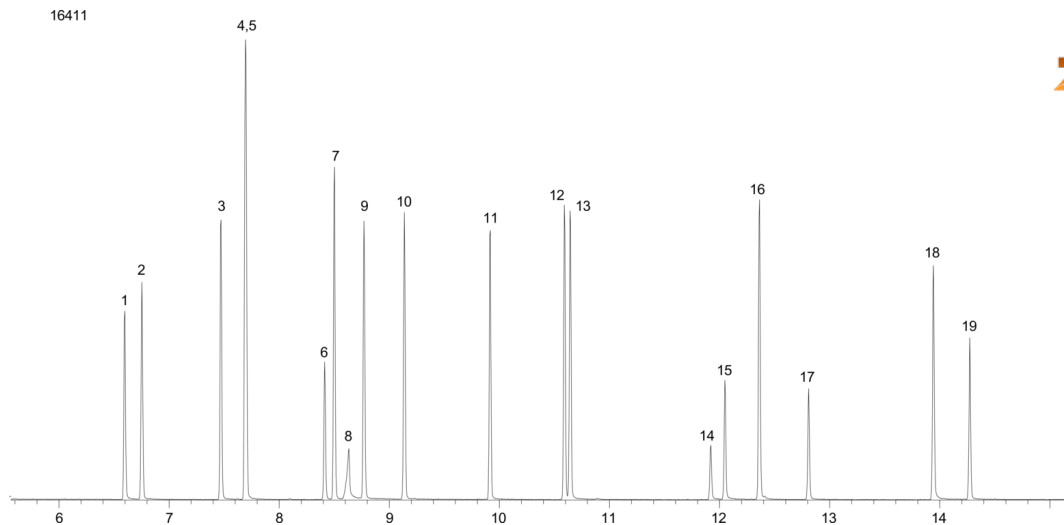
ID No.: 16411

## 8270 Phenol Mix ZB-5msi

**Column:** Zebron<sup>™</sup> ZB-5MSi, GC Cap. Column 30 m x 0.25 mm x 0.25  $\mu$ m, Ea  
**Phase:** 5% Phenyl 95% Dimethylpolysiloxane  
**Dimensions:** 30 meters x 0.25 mm x 0.25  $\mu$ m  
**Order No:** 7HG-G018-11  
**Oven Profile:** 40 °C for 2 min to 260 °C @ 15 °C/min for 5 min to 320 °C @ 15 °C/min for 2 min.  
**Carrier Gas:** Constant Flow Helium, 1.5 mL/min  
**Injection:** Splitless :1 1  $\mu$ L @ 240°C  
**Detection:** Mass Selective (MSD) (230°C)  
**Analyst Note:** 50ppm in dichloromethane



Products used in this application:



## 8270 Phenol Mix ZB-5msi

### ANALYTES:

- 1 Phenol
- 2 2-Chlorophenol
- 3 2-Methylphenol
- 4 4-Methylphenol
- 5 3-Methylphenol
- 6 2-Nitrophenol
- 7 2,4-Dimethylphenol
- 8 Benzoic acid
- 9 2,4-Dichlorophenol
- 10 2,6-Dichlorophenol
- 11 4-Chloro-3-methylphenol
- 12 2,4,6-Trichlorophenol
- 13 2,4,5-Trichlorophenol
- 14 2,4-Dinitrophenol
- 15 4-Nitrophenol
- 16 2,3,4,6-Tetrachlorophenol
- 17 2-Methyl-4,6-dinitrophenol
- 18 Pentachlorophenol
- 19 Dinoseb

