

# GC Application

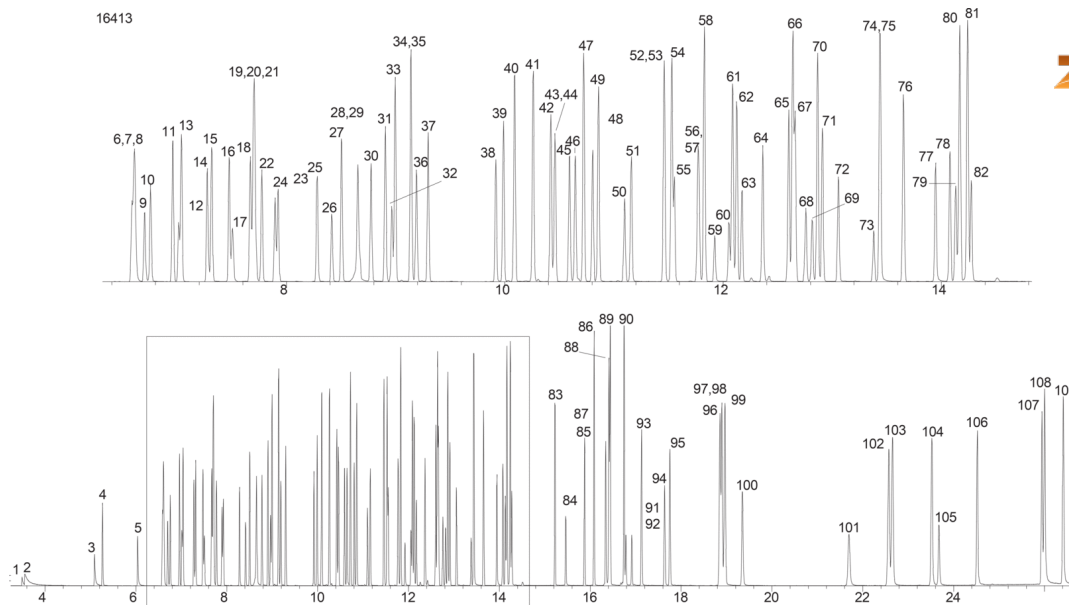
ID No.: 16413

## EPA Method 8270C ZB-5MSi

**Column:** Zebtron™ ZB-5MSi, GC Cap. Column 30 m x 0.25 mm x 0.25 μm, Ea  
**Phase:** 5% Phenyl 95% Dimethylpolysiloxane  
**Dimensions:** 30 meters x 0.25 mm x 0.25 μm  
**Order No:** 7HG-G018-11  
**Oven Profile:** 40 °C for 2 min to 260 °C @ 15 °C/min for 5 min to 320 °C @ 15 °C/min for 2 min.  
**Carrier Gas:** Constant Flow Helium, 1.5 mL/min  
**Injection:** Splitless :1 1 μL @ 240°C  
**Detection:** Mass Selective (MSD) (230°C)  
**Analyst Note:** Analytes 100ppm in methylene chloride



Products used in this application:



## EPA Method 8270C ZB-5MSi

## ANALYTES:

1	N-Nitrosodimethylamine	41	1-Methylnaphthalene	81	Anthracene
2	Pyridine	42	1,2,4,5-Tetrachlorobenzene	82	Dinoseb
3	Methylmethane sulfonate	43	Isosafrole-trans	83	Dibutyl phthalate
4	2-Fluorophenol	44	Hexachlorocyclopentadiene	84	4-Nitroquinoline-1-oxide
5	Ethyl methanesulfonate	45	2,4,6-Trichlorophenol	85	Isodrin
6	Aniline	46	2,4,5-Trichlorophenol	86	Fluoranthene
7	Phenol-d6	47	2-Fluorobiphenyl	87	Benzidine
8	Phenol	48	Isosafrole-cis	88	Pyrene-d10
9	bis(2-Chloroethyl)ether	49	2-Chloronaphthalene	89	Pyrene
10	2-Chlorophenol	50	2-Nitroaniline	90	p-Terphenyl-d14
11	1,3-Dichlorobenzene	51	1,4-Naphthoquinone	91	Aramite
12	1,4-Dichlorobenzene-d4	52	Dimethylphthalate	92	Aramite
13	1,4-Dichlorobenzene	53	1,3-Dinitrobenzene	93	Chlorobenzilate
14	Benzyl alcohol	54	Acenaphthylene	94	Kepone
15	1,2-Dichlorobenzene	55	2,6-Dinitrotoluene	95	Butylbenzyl phthalate
16	2-Methylphenol	56	3-Nitroaniline	96	Benz[a]anthracene
17	bis(2-Chloroisopropyl)ether	57	Acenaphthene-d10	97	3,3'-Dichlorobenzidine
18	Acetophenone	58	Acenaphthene	98	Chrysene-d12
19	4-Methylphenol	59	2,4-Dinitrophenol	99	Chrysene
20	3-Methylphenol	60	4-Nitrophenol	100	Di-n-octyl phthalate
21	N-Nitrosodi-n-propylamine	61	Dibenzofuran	101	bis(2-Ethylhexyl)phthalate
22	Hexachloroethane	62	Pentachlorobenzene	102	Benzo[b]fluoranthene
23	Nitrobenzene-d5	63	2,4-Dinitrotoluene	103	Benzo[k]fluoranthene
24	Nitrobenzene	64	2,3,4,6-Tetrachlorophenol	104	Benzo[a]pyrene
25	Isophorone	65	Diethylphthalate	105	Perylene-d12
26	2-Nitrophenol	66	Fluorene	106	3-Methylcholanthrene
27	2,4-Dimethylphenol	67	4-Chlorophenylphenylether	107	Ideno(1,2,3-cd)pyrene
28	Benzoic acid	68	4-Nitroaniline	108	Dibenz[a,h]anthracene
29	bis(2-Chloroethoxy)methane	69	2-Methyl-4,6-dinitrophenol	109	Benzo[g,h,i]perylene
30	2,4-Dichlorophenol	70	Diphenylamine		
31	1,2,4-Trichlorobenzene	71	Azobenzene		
32	Naphthalene-d8	72	Tribromophenol		
33	Naphthalene	73	1,3,5-Trinitrobenzene		
34	4-Chloroaniline	74	Phenacetin		
35	2,6-Dichlorophenol	75	4-Bromophenyl phenyl ether		
36	Hexachloropropene	76	Hexachlorobenzene		
37	Hexachlorobutadiene	77	Pentachlorophenol		
38	4-Chloro-3-methylphenol	78	Pentachloronitrobenzene		
39	Safrole	79	Phenanthrene-d10		
40	2-Methylnaphthalene	80	Phenanthrene		

