

# GC Application

ID No.: 16414

## EPA Method 8081A: Chlorinated Pesticides on ZB-XLB

**Column:** Zebtron™ ZB-XLB, GC Cap. Column 30 m x 0.25 mm x 0.25 µm, Ea

**Phase:** Proprietary XLB Phase

**Dimensions:** 30 meters x 0.25 mm x 0.25 µm

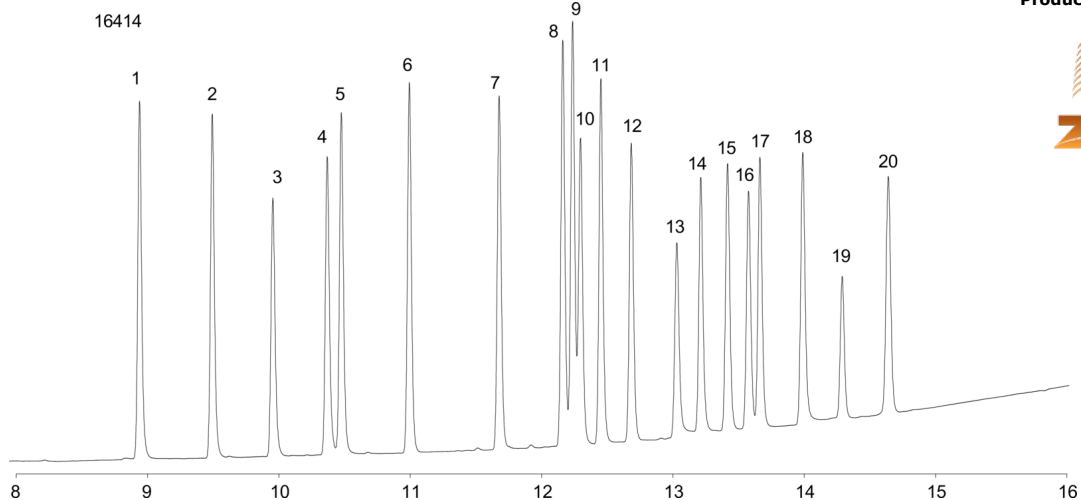
**Order No:** 7HG-G019-11

**Oven Profile:** 110 °C to 320 °C at 15 °C and hold until last peak elutes

**Carrier Gas:** Constant Flow Helium, 0.9 mL/min

**Injection:** Split 111:1 1.5 µL @ 250°C

**Detection:** Electron Capture (ECD) (350°C)



Products used in this application:



## EPA Method 8081A: Chlorinated Pesticides on ZB-XLB

### ANALYTES:

- 1 alpha-BHC
- 2 gamma-BHC
- 3 beta-BHC
- 4 delta-BHC
- 5 Heptachlor
- 6 Aldrin
- 7 Heptachlor epoxide
- 8 gamma-Chlordane
- 9 alpha-Chlordane
- 10 Endosulfan I
- 11 4,4'-DDE
- 12 Dieldrin
- 13 Endrin
- 14 4,4'-DDD
- 15 Endosulfan II
- 16 Endrin aldehyde
- 17 4,4'-DDT
- 18 Endosulfan sulfate
- 19 Methoxychlor
- 20 Endrin ketone

