

# GC Application

ID No.: 16415

## EPA Method 552.2: Haloacetic Acids & Dalapon on ZB-XLB

**Column:** Zebron™ ZB-XLB, GC Cap. Column 30 m x 0.25 mm x 0.25 µm, Ea

**Phase:** Proprietary XLB Phase

**Dimensions:** 30 meters x 0.25 mm x 0.25 µm

**Order No:** 7HG-G019-11

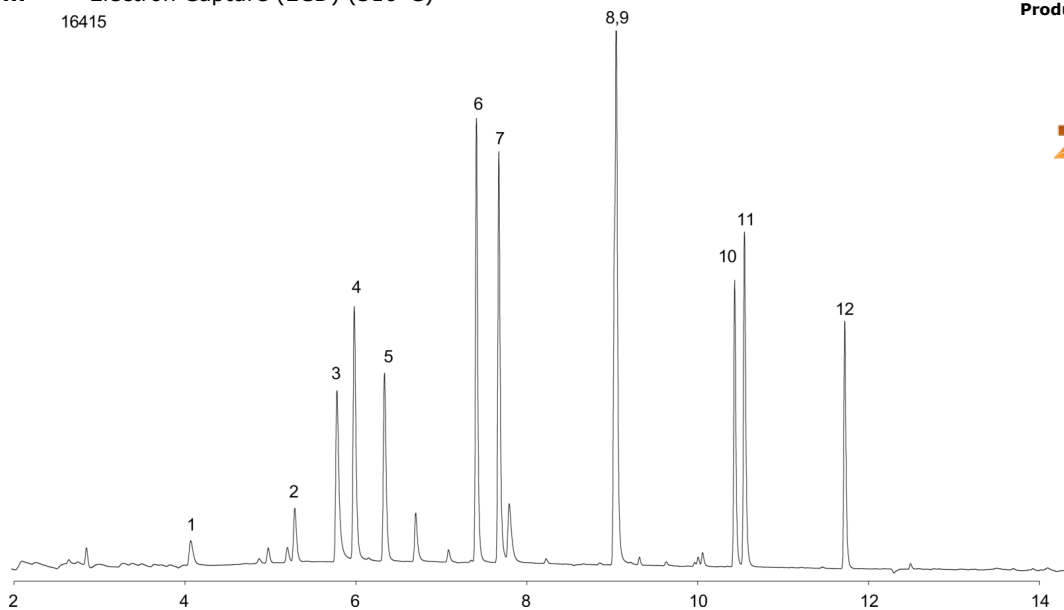
**Oven Profile:** 40 °C for 4min to 200 °C at 14 °C/min hold for 10min

**Carrier Gas:** Constant Flow Helium, 1.3 mL/min

**Injection:** Split 75:1 1 µL @ 200°C

**Detection:** Electron Capture (ECD) (310°C)

16415



Products used in this application:



## EPA Method 552.2: Haloacetic Acids & Dalapon on ZB-XLB

### ANALYTES:

- 1 Chloroacetic acid
- 2 Bromoacetic acid
- 3 Dichloroacetic acid
- 4 Dalapon
- 5 Trichloroacetic acid
- 6 Bromochloroacetic acid
- 7 1,2,3-Trichloropropane
- 8 Bromodichloroacetic acid
- 9 Dibromoacetic acid
- 10 Chlorodibromoacetic acid
- 11 2,3-Dibromopropionic acid
- 12 Tribromoacetic acid

