

GC Application

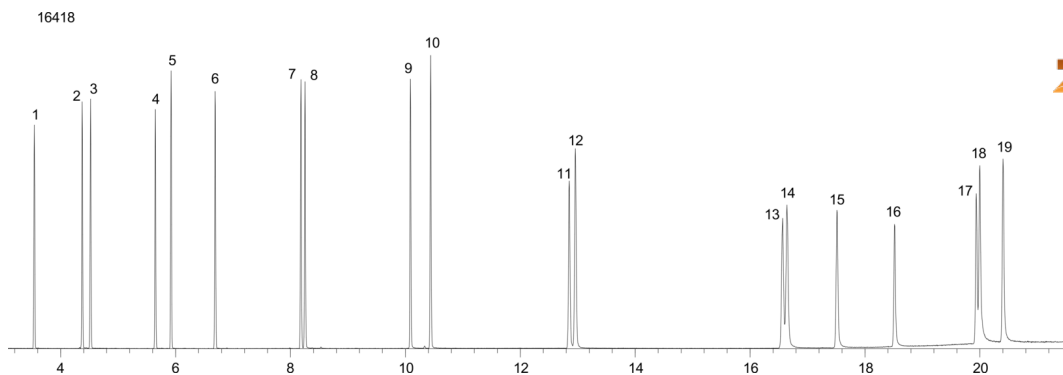
ID No.: 16418

PAHs ZB-5msi

Column: Zebtron™ ZB-5MSi, GC Cap. Column 30 m x 0.25 mm x 0.25 µm, Ea
Phase: 5% Phenyl 95% Dimethylpolysiloxane
Dimensions: 30 meters x 0.25 mm x 0.25 µm
Order No: 7HG-G018-11
Oven Profile: 100 °C to 260 °C @ 15 °C/min for 5 min to 320 °C @ 15 °C/min for 2 min.
Carrier Gas: Constant Flow Helium, 1.5 mL/min
Injection: Splitless :1 1 µL @ 240°C
Detection: Mass Selective (MSD) (230°C)
Analyst Note: 50ppm 8270 PAH mix in dichloromethane



Products used in this application:



PAHs ZB-5msi

ANALYTES:

- 1 Naphthalene
- 2 2-Methylnaphthalene
- 3 1-Methylnaphthalene
- 4 Acenaphthylene
- 5 Acenaphthene
- 6 Fluorene
- 7 Phenanthrene
- 8 Anthracene
- 9 Fluoranthene
- 10 Pyrene
- 11 Benz[a]anthracene
- 12 Chrysene
- 13 Benzo[b]fluoranthene
- 14 Benzo[k]fluoranthene
- 15 Benzo[a]pyrene
- 16 3-Methylchloanthrene
- 17 Indeno[1,2,3-cd]pyrene
- 18 Dibenz[a,h]anthracene
- 19 Benzo[g,h,i]perylene

