

# GC Application

ID No.: 16419

## 8270 PAHs ZB-MR2

**Column:** Zebtron<sup>™</sup> ZB-MultiResidue<sup>™</sup>-2, GC Cap. Column 30 m x 0.25 mm x 0.20 μm, Ea

**Phase:** Proprietary Pesticides Phase

**Dimensions:** 30 meters x 0.25 mm x 0.2 μm

**Order No:** 7HG-G017-10

**Oven Profile:** 100 °C to 260 °C @ 15 °C/min to 280 °C @ 8 °C/min for 3 min to 320 °C @ 15 °C/min for 5 min to 340 °C at 5 °C/min.

**Carrier Gas:** Constant Flow Helium, 1.5 mL/min

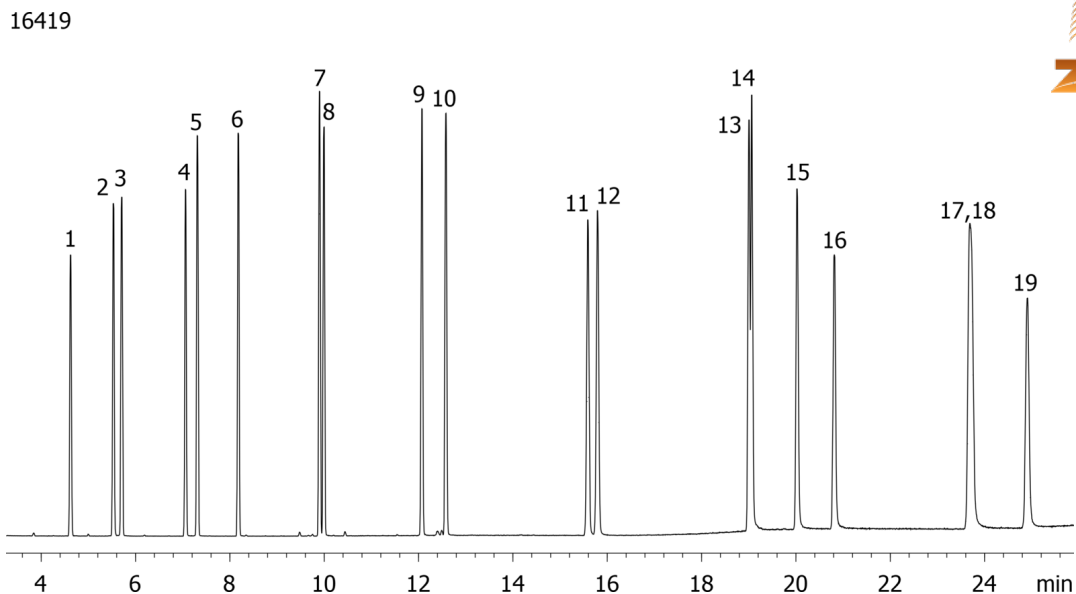
**Injection:** Split 5:1 1 μL @ 240°C

**Detection:** Mass Selective (MSD) (230°C)

**Analyst Note:** Analytes are 50ppm in Dichloromethane



Products used in this application:



## 8270 PAHs ZB-MR2

### ANALYTES:

- 1 Naphthalene
- 2 2-Methylnaphthalene
- 3 1-Methylnaphthalene
- 4 Acenaphthylene
- 5 Acenaphthene
- 6 Fluorene
- 7 Phenanthrene
- 8 Anthracene
- 9 Fluoranthene
- 10 Pyrene
- 11 Benz[a]anthracene
- 12 Chrysene
- 13 Benzo[b]fluoranthene
- 14 Benzo[k]fluoranthene
- 15 Benzo[a]pyrene
- 16 3-Methylchloanthrene
- 17 Ideno(1,2,3-cd)pyrene
- 18 Dibenz[a,h]anthracene
- 19 Benzo[g,h,i]perylene

