

GC Application

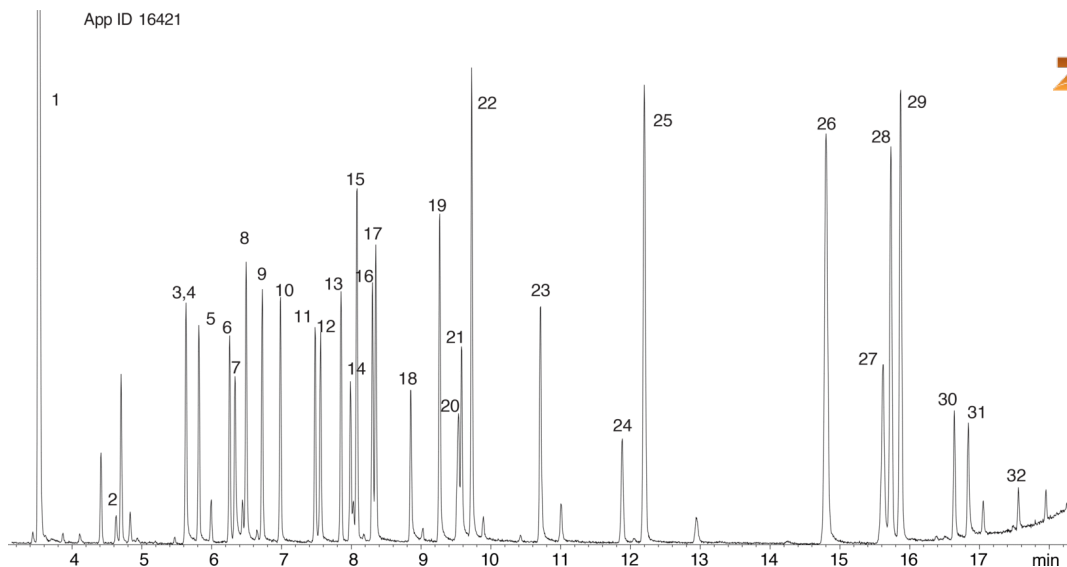
ID No.: 16421

Drug screen on ZB-5MSi

Column: Zebtron[™] ZB-5MSi, GC Cap. Column 30 m x 0.25 mm x 0.25 μ m, Ea
Phase: 5% Phenyl 95% Dimethylpolysiloxane
Dimensions: 30 meters x 0.25 mm x 0.25 μ m
Order No: 7HG-G018-11
Oven Profile: 140 °C to 240 °C @ 10 °C/min for 5 min to 320 °C @ 25 °C/min for 2.25 min.
Carrier Gas: Constant Flow Helium, 1.1 mL/min
Injection: Split 15:1 1 μ L @ 240°C
Detection: Mass Selective (MSD) (230°C)
Analyst Note: Analytes 25ppm in dichloromethane and are underivatized.



Products used in this application:



Drug screen on ZB-5MSi

ANALYTES:

- 1 Nicotine
- 2 Methylecgonine
- 3 Ibuprofen
- 4 Allobarbitol
- 5 Aprobarbitol
- 6 Butabarbitol
- 7 Acetaminophen
- 8 Phenacetin
- 9 Amobarbitol
- 10 Pentobarbitol
- 11 Secobarbitol
- 12 Meprobamate
- 13 Methyl benzilate
- 14 Caffeine
- 15 Benzphetamine
- 16 Hexobarbitol
- 17 Dimenhydrinate
- 18 Doxylamine
- 19 Phenobarbitol
- 20 8-Chlorotheophylline
- 21 Methapyrilene
- 22 Chlorpheniramine
- 23 Brompheniramine
- 24 Cocaine
- 25 Chlorcyclizine
- 26 Codeine
- 27 Morphine
- 28 Diazepam
- 29 Hydrocodone
- 30 6-Monoacetylmorphine
- 31 Oxycodone
- 32 Diacetylmorphine (Heroin)

