

## Water-Soluble Vitamin Mixture on Luna 5µm HILIC, pH 3.2

**Column:** Luna® 5 µm HILIC 200 Å, LC Column 150 x 4.6 mm, Ea

**Dimensions:** 150 x 4.6 mm ID

**Order No:** 00F-4450-E0

**Elution Type:** Gradient

**Eluent A:** Acetonitrile

**Eluent B:** Water

**Eluent C:** 100mM Ammonium Formate pH 3.2

Gradient Profile:	Step No.	Time (min)	Pct A	Pct B	Pct C
	1	0	90	5	5
	2	2.5	90	5	5
	3	10	50	45	5
	4	12.5	50	45	5

**Flow Rate:** 2 mL/min

**Col. Temp.:** ambient

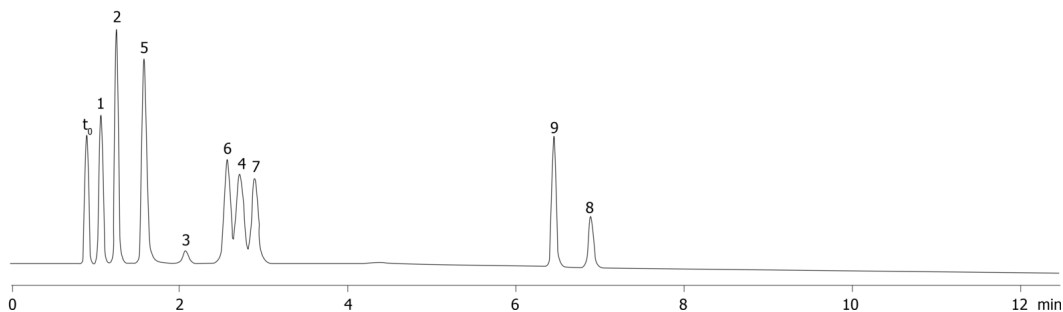
**Detection:** UV-Vis Abs.-Diode Array (PDA) @ 260 nm (ambient)

**Analyst Note:** SecurityGuard™ Guard Cartridge System extends column lifetime.

- SecurityGuard Cartridges, HILIC 4 x 3.0 mm, 10/Pk Part No.: AJ0-8329

- Holder Part No.: KJ0-4282

16435



Products used in this application:



### ANALYTES:

- 1 PABA
- 2 Nicotinamide
- 3 Riboflavin
- 4 Nicotinic acid
- 5 Pyridoxine
- 6 Thiamine
- 7 Ascorbic acid
- 8 Vitamin B12
- 9 Folic acid

