

# HPLC Application

ID No.: 16444

## Bamethan on Gemini C18

**Column:** Gemini<sup>®</sup> 5  $\mu$ m C18 110 Å, LC Column 100 x 2 mm, Ea

**Dimensions:** 100 x 2 mm ID

**Order No:** 00D-4435-B0

**Elution Type:** Isocratic

**Eluent A:** 0.1% Formic Acid

**Eluent B:** Acetonitrile

Gradient Profile:	Step No.	Time (min)	Pct A	Pct B
	1	0	97	3

**Flow Rate:** 0.4 mL/min

**Col. Temp.:** ambient

**Detection:** Mass Spectrometer (MS) @ amu (ambient)

**Detector Info:** 20 ng/mL in plasma, 1:5 plasma/Acetonitrile protein precipitation, 6.9 pg on column

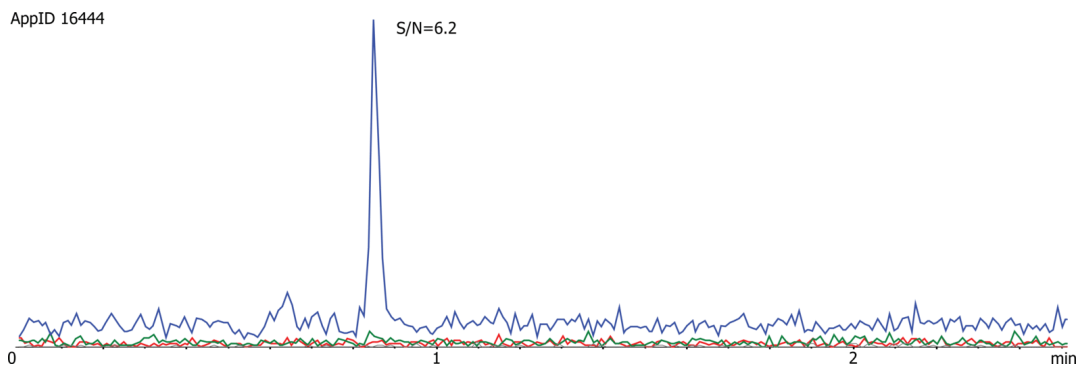
**Analyst Note:** SecurityGuard<sup>™</sup> Guard Cartridge System extends column lifetime.

- SecurityGuard Cartridges, Gemini C18 4 x 2.0mm, 10/Pk Part No.: AJ0-7596

- Holder Part No.: KJ0-4282



Products used in this application:



### ANALYTES:

1 Bemethan

