

# HPLC Application

ID No.: 16445

## Morphine and Metabolites on Luna HILIC (direct injection after PPT)

**Column:** Luna® 3 µm HILIC 200 Å, LC Column 100 x 2 mm, Ea

**Dimensions:** 100 x 2 mm ID

**Order No:** 00D-4449-B0

**Elution Type:** Gradient

**Eluent A:** Acetonitrile/100 mM Ammonium Formate, pH 3.2 (90:10)

**Eluent B:** Acetonitrile/100 mM Ammonium Formate, pH 3.2 (50:50)

<b>Gradient Profile:</b>	<b>Step No.</b>	<b>Time (min)</b>	<b>Pct A</b>	<b>Pct B</b>
	<b>1</b>	0	100	0
	<b>2</b>	1	100	0
	<b>3</b>	3	0	100
	<b>4</b>	4.5	0	100

**Flow Rate:** 0.4 mL/min

**Col. Temp.:** ambient

**Detection:** Mass Spectrometer (MS) @ amu (ambient)

**Detector Info:** following 5:1 Acetonitrile/Water PPT, direct injection

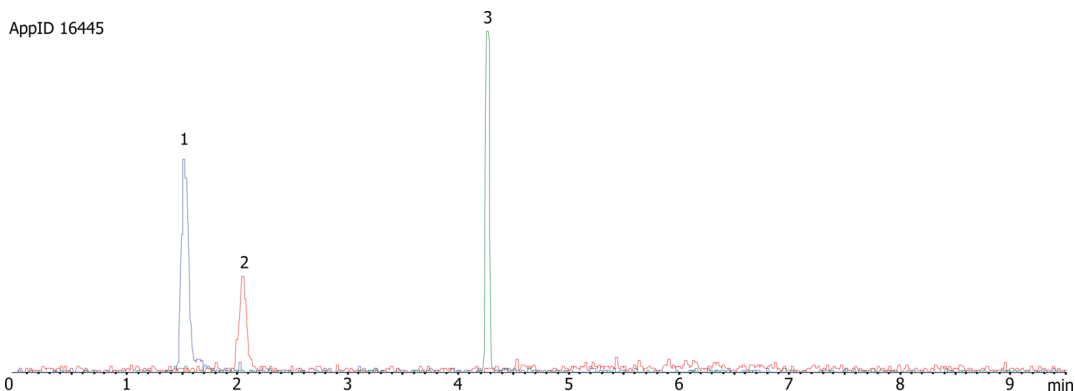
**Analyst Note:** SecurityGuard™ Guard Cartridge System extends column lifetime.

- SecurityGuard Cartridges, HILIC 4 x 2.0 mm, 10/Pk Part No.: AJ0-8328

- Holder Part No.: KJ0-4282



Products used in this application:



### ANALYTES:

- 1 Morphine
- 2 Normorphine
- 3 Morphine-3-beta-D-glucuronide

