

HPLC Application

ID No.: 16450

Cytochrome C Mixture on Jupiter 5u C18 40°C

Column: Jupiter[®] 5 µm C18 300 Å, LC Column 150 x 4.6 mm, Ea

Dimensions: 150 x 4.6 mm ID

Order No: 00F-4053-E0

Elution Type: Gradient

Eluent A: 0.1% TFA and 5% Acetonitrile in Water

Eluent B: 0.1% TFA in Acetonitrile

Gradient Profile:	Step No.	Time (min)	Pct A	Pct B
	1	0	75	25
	2	15	45	55

Flow Rate: 1 mL/min

Col. Temp.: 40 °C

Detection: UV-Vis Abs.-Diode Array (PDA) @ 214 nm (40 °C)

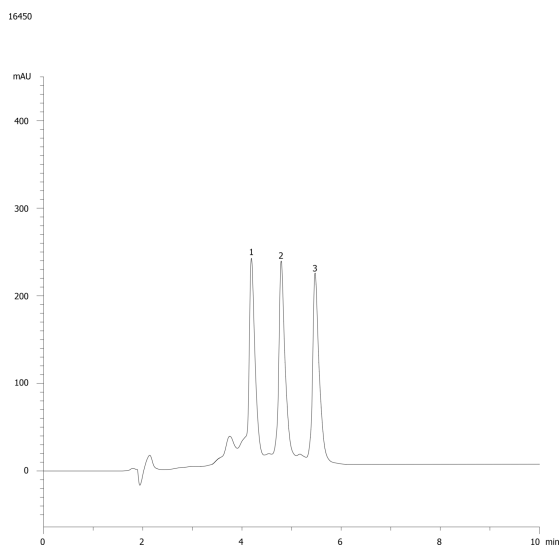
Analyst Note: SecurityGuard[™] Guard Cartridge System extends column lifetime.

- SecurityGuard Cartridges, Widepore C18 4 x 3.0mm, 10/Pk Part No.: AJ0-4321

- Holder Part No.: KJ0-4282



Products used in this application:



ANALYTES:

1 Cytochrome c Horse Heart

Retention Time: 4.19 min

2 Cytochrome c Bovine Heart

Retention Time: 4.79 min

3 Cytochrome c Saccharomyces Cerevisiae

Retention Time: 5.48 min

