

# HPLC Application

ID No.: 16452

## Insulin Mixture on Jupiter 5u C18

**Column:** Jupiter<sup>®</sup> 5 µm C18 300 Å, LC Column 150 x 4.6 mm, Ea

**Dimensions:** 150 x 4.6 mm ID

**Order No:** 00F-4053-E0

**Elution Type:** Gradient

**Eluent A:** 0.1% TFA and 5% Acetonitrile in Water

**Eluent B:** 0.08% TFA, 90% Acetonitrile

Gradient Profile:	Step No.	Time (min)	Pct A	Pct B
	1	0	70	30
	2	15	68	32

**Flow Rate:** 1 mL/min

**Col. Temp.:** 25 °C

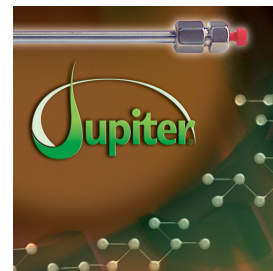
**Detection:** UV-Vis Abs.-Diode Array (PDA) @ 214 nm (25 °C)

**Analyst Note:** SecurityGuard<sup>™</sup> Guard Cartridge System extends column lifetime.

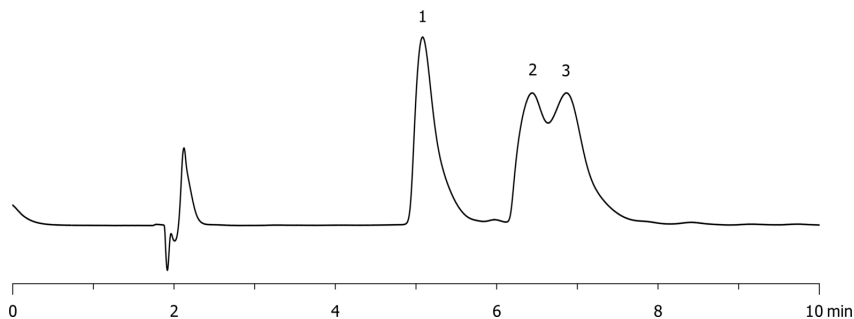
- SecurityGuard Cartridges, Widedpore C18 4 x 3.0mm, 10/Pk Part No.: AJ0-4321

- Holder Part No.: KJ0-4282

16452



Products used in this application:



### ANALYTES:

**1** Bovine Insulin

Retention Time: 5.08 min

**2** Human Insulin

Retention Time: 6.44 min

**3** Porcine Insulin

Retention Time: 6.87 min

