

HPLC Application

ID No.: 16453

Insulin Mixture on Jupiter 3u C18

Column: Jupiter[®] 3 μ m C18 300 Å, LC Column 150 x 4.6 mm, Ea

Dimensions: 150 x 4.6 mm ID

Order No: 00F-4263-E0

Elution Type: Gradient

Eluent A: 0.1% TFA and 5% Acetonitrile in Water

Eluent B: 0.08% TFA, 90% Acetonitrile

Gradient Profile:	Step No.	Time (min)	Pct A	Pct B
	1	0	70	30
	2	15	68	32

Flow Rate: 1 mL/min

Col. Temp.: 25 °C

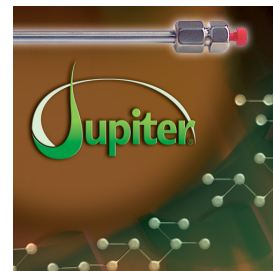
Detection: UV-Vis Abs.-Diode Array (PDA) @ 214 nm (25 °C)

Analyst Note: SecurityGuard[™] Guard Cartridge System extends column lifetime.

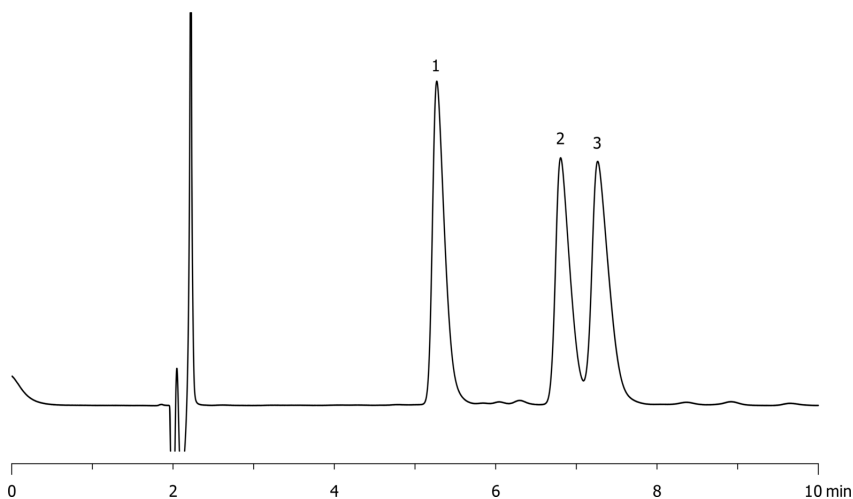
- SecurityGuard Cartridges, Widedpore C18 4 x 3.0mm, 10/Pk Part No.: AJ0-4321

- Holder Part No.: KJ0-4282

16453



Products used in this application:



ANALYTES:

1 Bovine Insulin

Retention Time: 5.27 min

2 Human Insulin

Retention Time: 6.81 min

3 Porcine Insulin

Retention Time: 7.27 min

