

GC Application

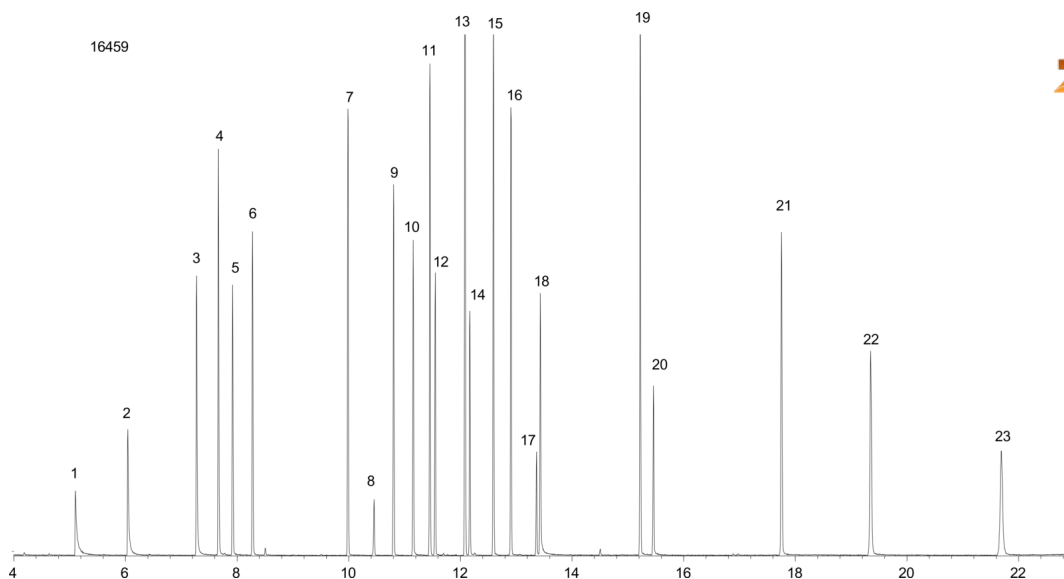
ID No.: 16459

Benzene Derivatives on ZB-5MSi

Column: Zebron[™] ZB-5MSi, GC Cap. Column 30 m x 0.25 mm x 0.25 μ m, Ea
Phase: 5% Phenyl 95% Dimethylpolysiloxane
Dimensions: 30 meters x 0.25 mm x 0.25 μ m
Order No: 7HG-G018-11
Oven Profile: 40 °C for 2 min to 260 °C @ 15 °C/min for 5 min to 320 °C at 15 °C/min for 2 min.
Carrier Gas: Constant Flow Helium, 1.7 mL/min
Injection: Splitless :1 1 μ L @ 240°C
Detection: Mass Selective (MSD) (180°C)
Analyst Note: 50ppm in methylene chloride



Products used in this application:



Benzene Derivatives on ZB-5MSi

ANALYTES:

- 1 Methyl methane sulfonate
- 2 Ethyl methane sulfonate
- 3 Benzyl alcohol
- 4 Acetophenone
- 5 Nitrobenzene
- 6 Isophorone
- 7 Safrole
- 8 Isosafrole
- 9 Isosafrole
- 10 1,4-Naphthoquinone
- 11 Dimethyl phthalate
- 12 2,6-Dinitrotoluene
- 13 Dibenzofuran
- 14 2,4-Dinitrotoluene
- 15 Diethyl phthalate
- 16 Azobenzene
- 17 1,3,5-Trinitrobenzene
- 18 Phenacetin
- 19 Dibutyl phthalate
- 20 4-Nitroquinoline-1-oxide
- 21 Butyl benzyl phthalate
- 22 bis(2-Ethylhexyl)phthalate
- 23 Di-n-octyl phthalate

