

GC Application

ID No.: 16461

EPA 552.2 Haloacetic acids on ZB-XLB

Column: Zebron[™] ZB-XLB, GC Cap. Column 30 m x 0.25 mm x 0.25 μ m, Ea

Phase: Proprietary XLB Phase

Dimensions: 30 meters x 0.25 mm x 0.25 μ m

Order No: 7HG-G019-11

Oven Profile: 48 °C for 15 min to 200 °C @ 10 °C/min.

Carrier Gas: Constant Flow Helium, 1.5 mL/min

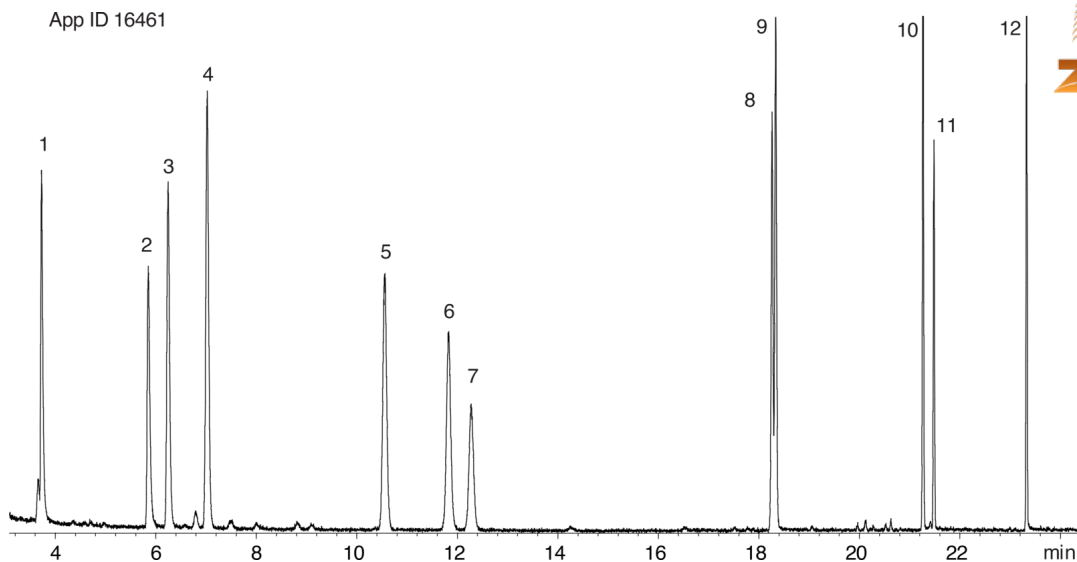
Injection: Split 5:1 1 μ L @ 250°C

Detection: Mass Selective (MSD) (180°C)

Analyst Note: 50ppm methylated EPA 552.2 mix in methylene chloride.



Products used in this application:



EPA 552.2 Haloacetic acids on ZB-XLB

ANALYTES:

- 1 Monochloroacetic acid
- 2 Monobromoacetic acid
- 3 Dichloroacetic acid
- 4 Dalapon
- 5 Trichloroacetic acid
- 6 Bromochloroacetic acid
- 7 1,2,3-Trichloropropane
- 8 Bromodichloroacetic acid
- 9 Dibromoacetic acid
- 10 Chlorodibromoacetic acid
- 11 2,3-Dibromopropionic acid
- 12 Tribromoacetic acid

