

## EPA 552.2 Haloacetic acids on ZB-XLB

**Column:** Zebron<sup>™</sup> ZB-XLB, GC Cap. Column 30 m x 0.25 mm x 0.50 μm, Ea

**Phase:** Proprietary XLB Phase

**Dimensions:** 30 meters x 0.25 mm x 0.5 μm

**Order No:** 7HG-G019-17

**Oven Profile:** 50 °C for 15 min to 200 °C @ 10 °C/min.

**Carrier Gas:** Constant Flow Helium, 1.5 mL/min

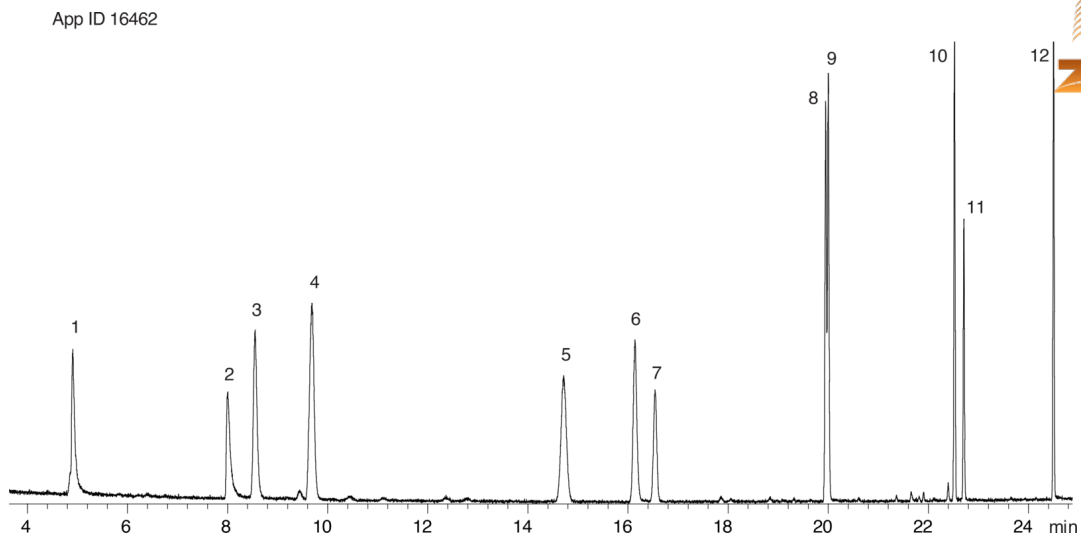
**Injection:** Split 5:1 1 μL @ 250°C

**Detection:** Mass Selective (MSD) (180°C)

**Analyst Note:** 50ppm methylated EPA 552.2 mix in methylene chloride.



Products used in this application:



## EPA 552.2 Haloacetic acids on ZB-XLB

### ANALYTES:

- 1 Monochloroacetic acid
- 2 Monobromoacetic acid
- 3 Dichloroacetic acid
- 4 Dalapon
- 5 Trichloroacetic acid
- 6 Bromochloroacetic acid
- 7 1,2,3-Trichloropropane
- 8 Bromodichloroacetic acid
- 9 Dibromoacetic acid
- 10 Chlorodibromoacetic acid
- 11 2,3-Dibromopropionic acid
- 12 Tribromoacetic acid

