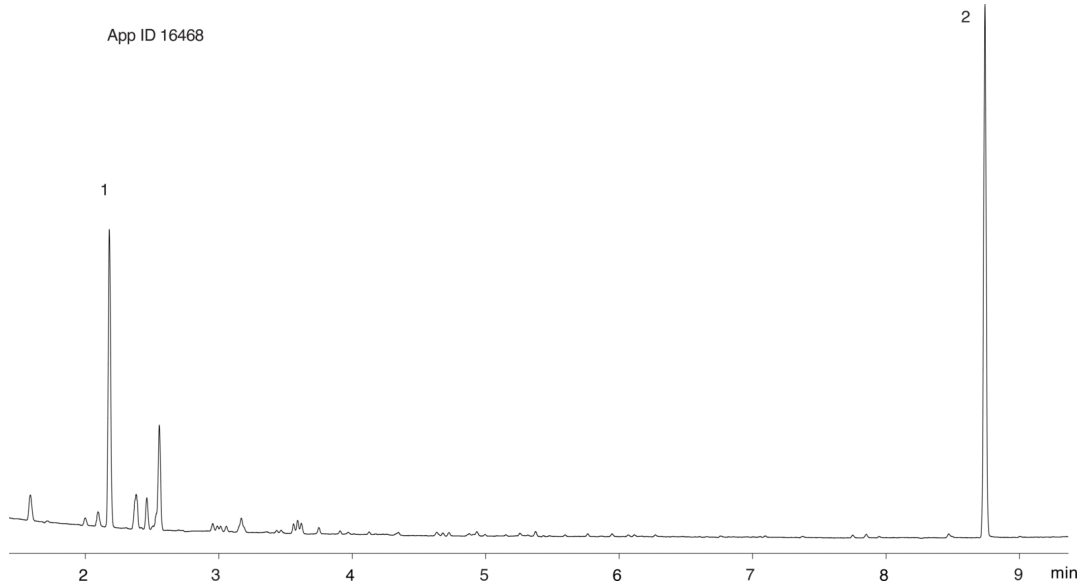


## Aroclor 1221 on ZB-XLB

**Column:** N/A  
**Phase:** N/A  
**Dimensions:** N/A  
**Order No:** N/A  
**Oven Profile:** N/A

**Carrier Gas:** N/A  
**Injection:** N/A  
**Detection:** N/A

**Analyst Note:** Aroclor 1221 concentration 1 ug/ml



### ANALYTES:

- 1 Tetrachloro-m-xylene
- 2 Decachlorobiphenyl

