

GC Application

ID No.: 16477

Rose Oil on ZB-XLB

Column: Zebtron[™] ZB-XLB, GC Cap. Column 30 m x 0.25 mm x 0.25 μm, Ea

Phase: Proprietary XLB Phase

Dimensions: 30 meters x 0.25 mm x 0.25 μm

Order No: 7HG-G019-11

Oven Profile: 50 °C to 340 °C at 10 °C/min for 10 min

Carrier Gas: Constant Flow Helium, 1 mL/min

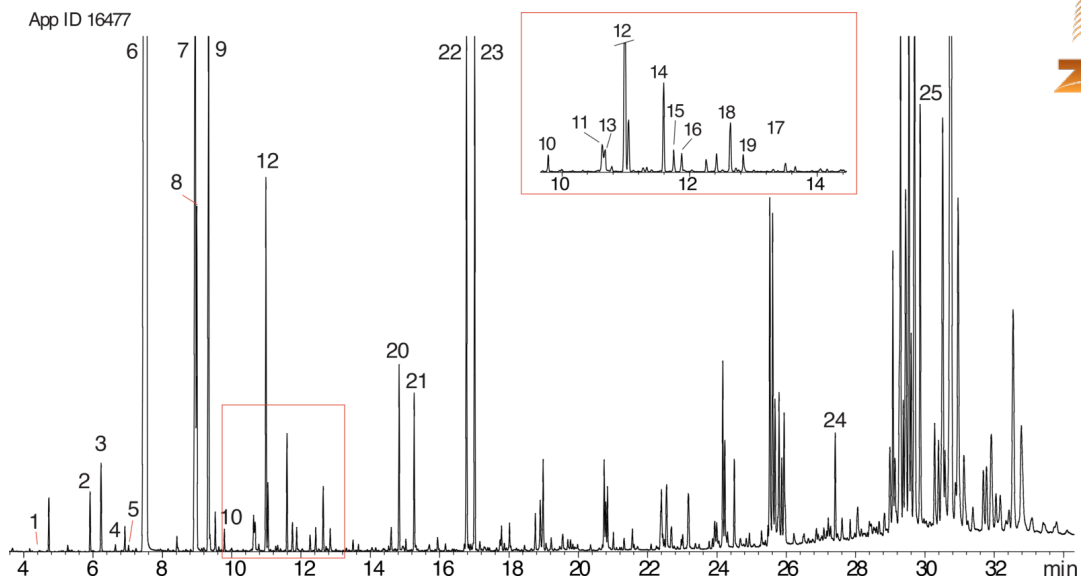
Injection: Split 25:1 1 μL @ 250°C

Detection: Mass Selective (MSD) (180°C)

Analyst Note: 1% Rose oil in ethyl acetate



Products used in this application:



Rose Oil on ZB-XLB

ANALYTES:

- 1 a-Pinene
- 2 2-Ethylhexanol
- 3 Benzyl alcohol
- 4 Terpineol
- 5 Linalool
- 6 Phenylethyl alcohol
- 7 b-Citronellol
- 8 cis-Geraniol
- 9 trans-Geraniol
- 10 b-Citral
- 11 Geranic acid
- 12 Eugenol
- 13 Geranyl acetate
- 14 Eugenol methyl ether
- 15 Caryophyllene
- 16 alpha-Guaiene
- 17 alpha-Caryophyllene
- 18 Germacrene D
- 19 alpha-Bulnesene
- 20 Heptadecane (C17)
- 21 Farnesol
- 22 1-Nonadecene
- 23 Nonadecane
- 24 Vitamin E
- 25 alpha-Amirin

