

GC Application

ID No.: 16479

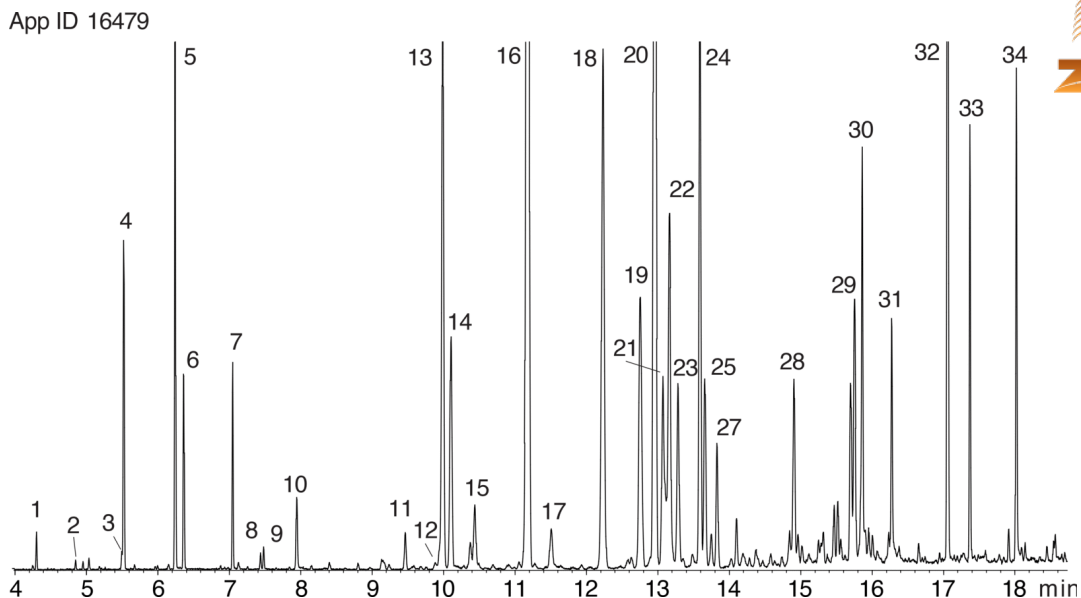
Ylang Ylang Oil on ZB-XLB

Column: Zebron™ ZB-XLB, GC Cap. Column 30 m x 0.25 mm x 0.25 µm, Ea
Phase: Proprietary XLB Phase
Dimensions: 30 meters x 0.25 mm x 0.25 µm
Order No: 7HG-G019-11
Oven Profile: 50 °C for 1 min to 140 °C @ 15 °C/min for 5 min to 280 °C @ 15 °C/min.

Carrier Gas: Constant Flow Helium, 1.5 mL/min
Injection: Split 50:1 1 µL @ 250°C
Detection: Mass Selective (MSD) (180°C)
Analyst Note: 1% ylang ylang oil in ethyl acetate



Products used in this application:



Ylang Ylang Oil on ZB-XLB

ANALYTES:

- 1 α -Pinene
- 2 β -Pinene
- 3 Eucalyptol
- 4 1-Methoxy-4-methyl benzene
- 5 Linalool
- 6 Benzoic acid methyl ester
- 7 Benzyl acetate
- 8 α -Terpineol
- 9 Methyl salicylate
- 10 Nerol
- 11 α -Cubebene
- 12 Ylangene
- 13 Geraniol
- 14 Copaene
- 15 β -Elemene
- 16 β -Caryophyllene
- 17 β -Cubebene
- 18 α -Caryophyllene
- 19 γ -Muurolene
- 20 Germacrene-D
- 21 α -Farnesene
- 22 α -Bergamotene
- 23 α -Muurolene
- 24 Amorphene
- 25 Cadinene
- 26 Calamenene
- 27 Calamenene
- 28 Caryophyllene oxide
- 29 Cadinol
- 30 Cadinol
- 31 Farnesol
- 32 Benzyl benzoate
- 33 Farnesyl acetate
- 34 Benzyl salicylate

