

GC Application

ID No.: 16481

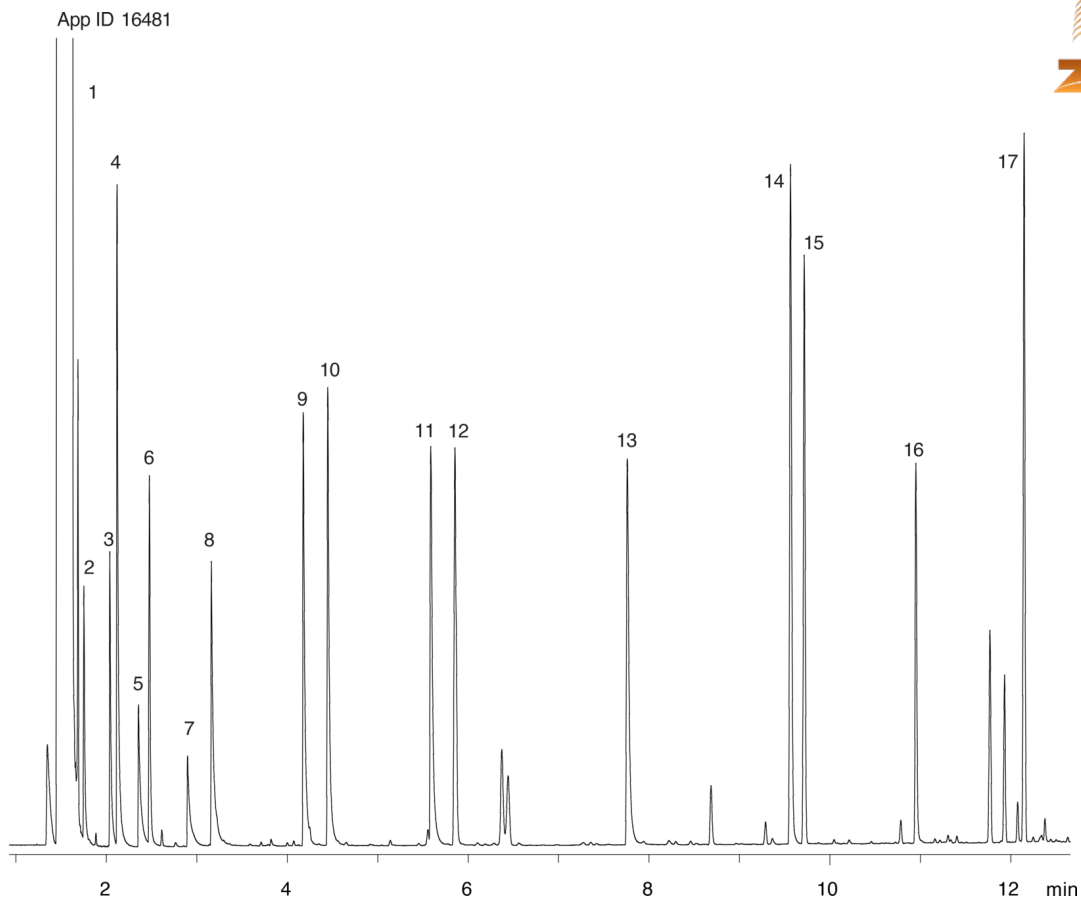
Aliphatic Amines on ZB-5MSi

Column: Zebtron™ ZB-5MSi, GC Cap. Column 30 m x 0.25 mm x 0.50 μm, Ea
Phase: 5% Phenyl 95% Dimethylpolysiloxane
Dimensions: 30 meters x 0.25 mm x 0.5 μm
Order No: 7HG-G018-17
Oven Profile: 40 °C to 100 °C @ 15 °C/min for 3 min to 250 °C @ 15 °C/min for 3 min.

Carrier Gas: Constant Flow Hydrogen, 1.7 mL/min
Injection: Split 15:1 1 μL @ 180°C
Detection: Flame Ionization (FID) (300°C)
Analyst Note: Analyte concentration 100 ppm



Products used in this application:



Aliphatic Amines on ZB-5MSi

ANALYTES:

- 1 Ethanol
- 2 3-Butylamine
- 3 2-Butylamine
- 4 Isobutylamine
- 5 n-Butylamine
- 6 Diisopropylamine
- 7 Isopentylamine
- 8 Pentylamine
- 9 Hexylamine
- 10 Cyclohexylamine
- 11 Heptylamine
- 12 Dibutylamine
- 13 Octylamine
- 14 Nonylamine
- 15 Dipentylamine
- 16 Decylamine
- 17 Dihexylamine

