

# GC Application

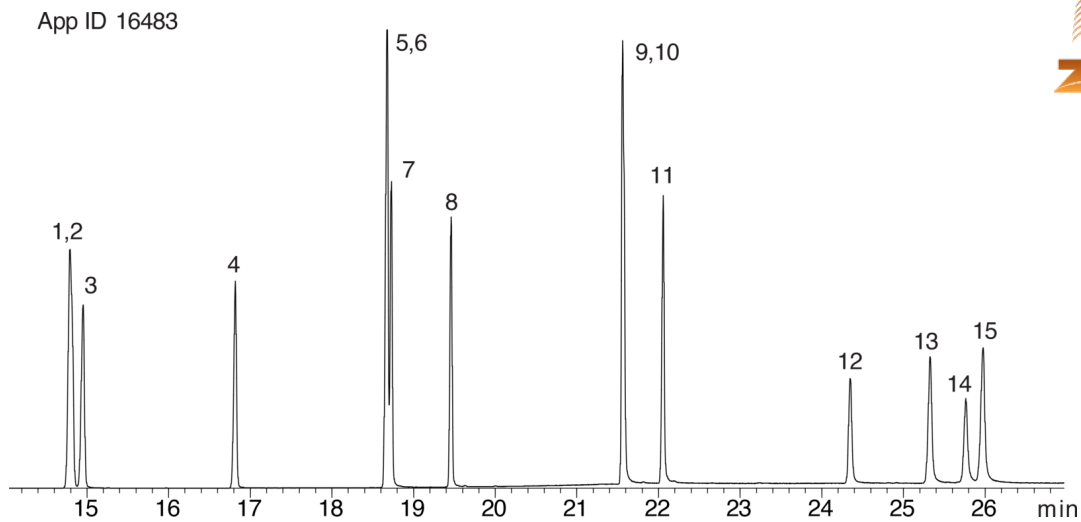
ID No.: 16483

## Polynuclear Aromatic Hydrocarbons (PAHs), EU Mix on ZB-XLB

**Column:** Zebtron<sup>™</sup> ZB-XLB, GC Cap. Column 30 m x 0.25 mm x 0.25  $\mu$ m, Ea  
**Phase:** Proprietary XLB Phase  
**Dimensions:** 30 meters x 0.25 mm x 0.25  $\mu$ m  
**Order No:** 7HG-G019-11  
**Oven Profile:** 100 °C to 260 °C @ 15 °C/min for 5 min to 340 °C @ 15 °C/min for 10 min.  
**Carrier Gas:** Constant Flow Helium, 1.2 mL/min  
**Injection:** Split 5:1 1  $\mu$ L @ 250°C  
**Detection:** Mass Selective (MSD) (180°C)  
**Analyst Note:** 50ppm EU PAH mix in dichloromethane



Products used in this application:



## Polynuclear Aromatic Hydrocarbons (PAHs), EU Mix on ZB-XLB

### ANALYTES:

- 1 Benz[a]anthracene
- 2 Cyclopenta(c,d)pyrene
- 3 Chrysene
- 4 5-Methylchrysene
- 5 Benzo[j]fluoranthene
- 6 Benzo[b]fluoranthene
- 7 Benzo[k]fluoranthene
- 8 Benzo[a]pyrene
- 9 Indeno[1,2,3-cd]pyrene
- 10 Dibenz[a,h]anthracene
- 11 Benzo[g,h,i]perylene
- 12 Dibenzo[a,l]pyrene
- 13 Dibenzo[a,e]pyrene
- 14 Dibenzo[a,i]pyrene
- 15 Dibenzo[a,h]pyrene

