

## Polynuclear Aromatic Hydrocarbons (PAHs), Combined US and EU mix on ZB-XLB

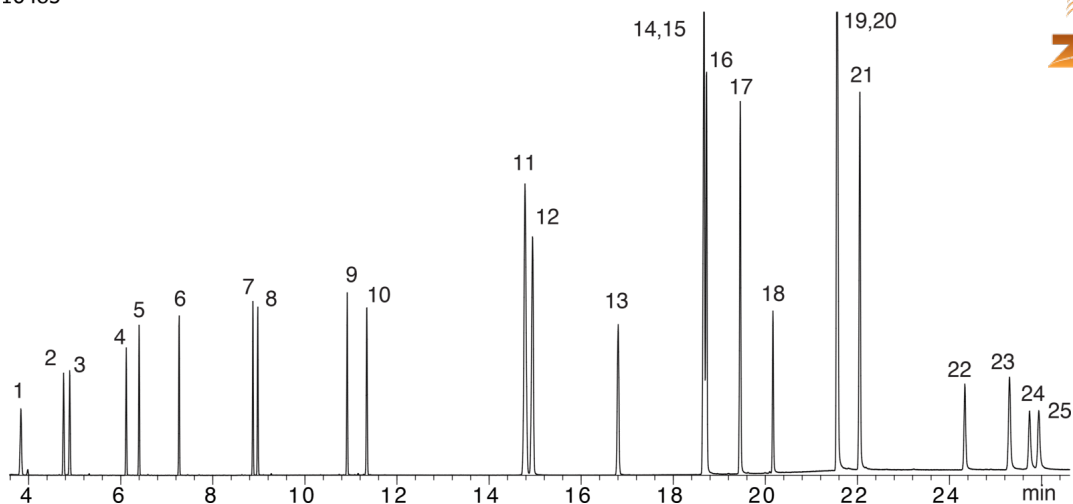
**Column:** Zebtron™ ZB-XLB, GC Cap. Column 30 m x 0.25 mm x 0.25 µm, Ea  
**Phase:** Proprietary XLB Phase  
**Dimensions:** 30 meters x 0.25 mm x 0.25 µm  
**Order No:** 7HG-G019-11  
**Oven Profile:** 100 °C to 260 °C @ 15 °C/min for 5 min to 340 °C @ 15 °C/min for 10 min.  
**Carrier Gas:** Constant Flow Helium, 1.2 mL/min  
**Injection:** Split 5:1 1 µL @ 250°C  
**Detection:** Mass Selective (MSD) (180°C)  
**Analyst Note:** 25ppm in dichloromethane



Products used in this application:



16485



## Polynuclear Aromatic Hydrocarbons (PAHs), Combined US and EU mix on ZB-XLB

### ANALYTES:

- 1 Naphthalene
- 2 2-Methylnaphthalene
- 3 1-Methylnaphthalene
- 4 Acenaphthylene
- 5 Acenaphthene
- 6 Fluorene
- 7 Phenanthrene
- 8 Anthracene
- 9 Fluoranthene
- 10 Pyrene
- 11 Benz[a]anthracene
- 12 Chrysene
- 13 5-Methylchrysene
- 14 Benzo[j]fluoranthene
- 15 Benzo[b]fluoranthene
- 16 Benzo[k]fluoranthene
- 17 Benzo[a]pyrene
- 18 3-Methylcholanthrene
- 19 Indeno[1,2,3-cd]pyrene
- 20 Dibenz[a,h]anthracene
- 21 Benzo[g,h,i]perylene
- 22 Dibenzo[a,l]pyrene
- 23 Dibenzo[a,e]pyrene
- 24 Dibenzo[a,i]pyrene
- 25 Dibenzo[a,h]pyrene

