

GC Application

ID No.: 16504

H2S and COS on ZB-1

Column: Zebtron[™] ZB-1, GC Cap. Column 30 m x 0.32 mm x 3.00 μ m, Ea

Phase: 100% Dimethylpolysiloxane

Dimensions: 30 meters x 0.32 mm x 3 μ m

Order No: 7HM-G001-36

Oven Profile: 30 °C for 3 min

Carrier Gas: Constant Flow Helium, 2 mL/min

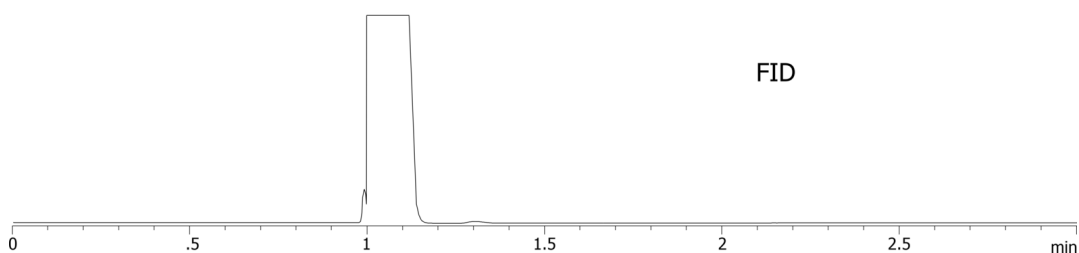
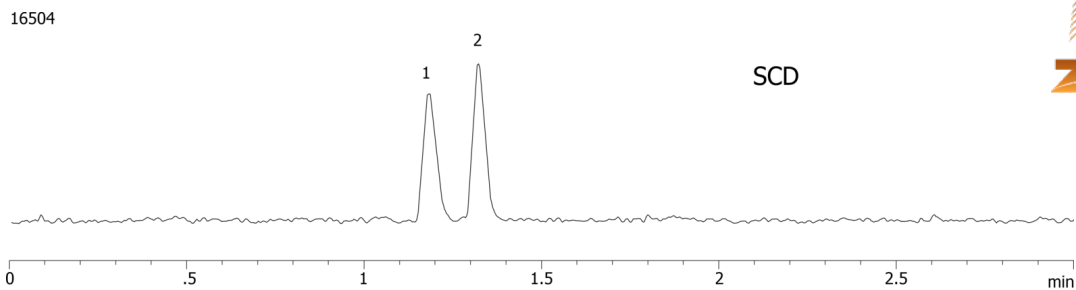
Injection: Split 10:1 0.5 μ L @ 100°C

Detection: Sulfur (SCD) (200°C)

Analyst Note: Analytes are 5ppm in Ethylene



Products used in this application:



ANALYTES:

- 1 Hydrogen sulfide
- 2 COS

