

GC Application

ID No.: 16506

TPH Diesel Analysis on ZB-1MS

Column: Zebtron[™] ZB-1MS, GC Cap. Column 20 m x 0.18 mm x 0.18 µm, Ea

Phase: 100% Dimethylpolysiloxane

Dimensions: 20 meters x 0.18 mm x 0.18 µm

Order No: 7FD-G011-08

Oven Profile: 75 °C for 1 min to 320 @ 30 °C/min for 3.83 min

Carrier Gas: Ramp Pressure Helium, 2.5 mL/min

Injection: Splitless :1 1 µL @ 280°C

Detection: Flame Ionization (FID) (300°C)

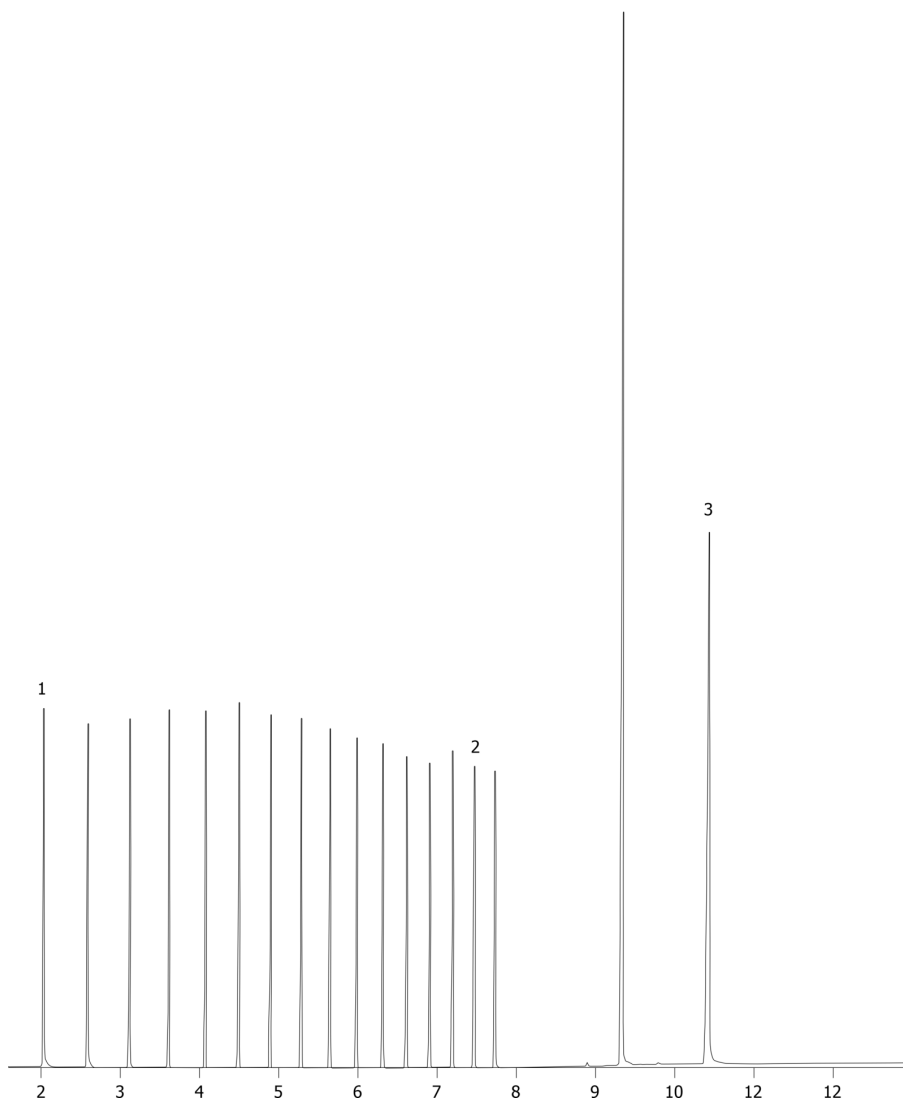
Analyst Note: Pressure ramp: 20. for 8 min to 3.0 mL/min @ 2.0 mL/min for 6 min.



Products used in this application:



16506



ANALYTES:

1 C10

2 C24

©2014 Phenomenex Inc. All rights reserved.

For more information contact your Phenomenex Representative at support@phenomenex.com



Phenomenex products are available worldwide.

www.phenomenex.com

support@phenomenex.com