

Glycols in Toothpaste Sample on ZB-WAXplus

Column: Zebron™ ZB-WAXplus™, GC Cap. Column 30 m x 0.25 mm x 0.25 μm, Ea

Phase: Polyethylene Glycol (PEG)

Dimensions: 30 meters x 0.25 mm x 0.25 μm

Order No: 7HG-G013-11

Oven Profile: 130 °C to 220 °C @ 20 °C/min for 2 min.

Carrier Gas: Constant Flow Helium, 1.5 mL/min

Injection: Split 20:1 0.5 μL @ 225°C

Detection: Mass Spectrometer (MS) (250°C)

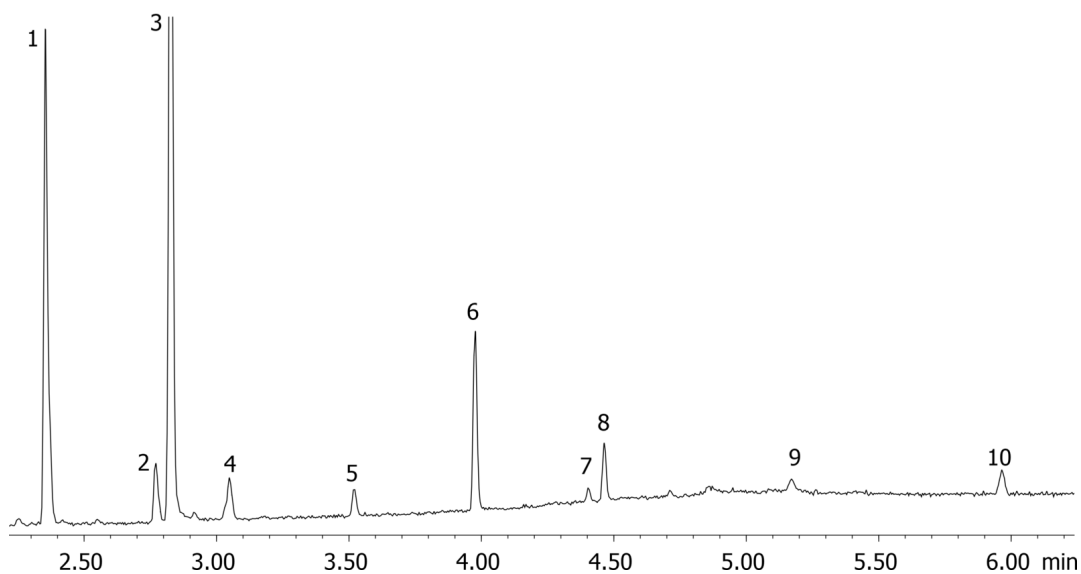
Analyst Note: 0.10 mg toothpaste in 1.0 mL of 50-50 ACN/Water. Mixed then centrifuged. 100 μl supernatant diluted to 400 μl 50-50 ACN/Water. To inject, transfer 250 μl to an insert in sample vial with 25 μl 5mg/ml internal standard. Used a 5 m retention gap pre-column. Glycol standards are in application 16507.
Note - no glycols were found in this toothpaste sample.



Products used in this application:



16508



Glycols in Toothpaste Sample on ZB-WAXplus

ANALYTES:

- 1 Levomenthol
- 2 Carvone
- 3 1,3-Propanediol
- 4 Anethole
- 5 Cyclodecane
- 6 3-Phenyl-2-propenal
- 7 Eicosene
- 8 Eugenol
- 9 Glycerin
- 10 o-Methoxycinnamaldehyde

