

GC Application

ID No.: 16520

Chlorinated compounds on ZB-MR2

Column: Zebtron™ ZB-MultiResidue™-2, GC Cap. Column 30 m x 0.25 mm x 0.20 μm, Ea

Phase: Proprietary Pesticides Phase

Dimensions: 30 meters x 0.25 mm x 0.2 μm

Order No: 7HG-G017-10

Oven Profile: 40 °C for 2 min to 260 °C @ 15 °C/min to 280 °C @ 8 °C/min for 3 min to 320 °C @ 15 °C/min for 5 min.

Carrier Gas: Constant Flow Helium, 1.5 mL/min

Injection: Splitless :1 1 μL @ 240°C

Detection: Mass Selective (MSD) (320°C)

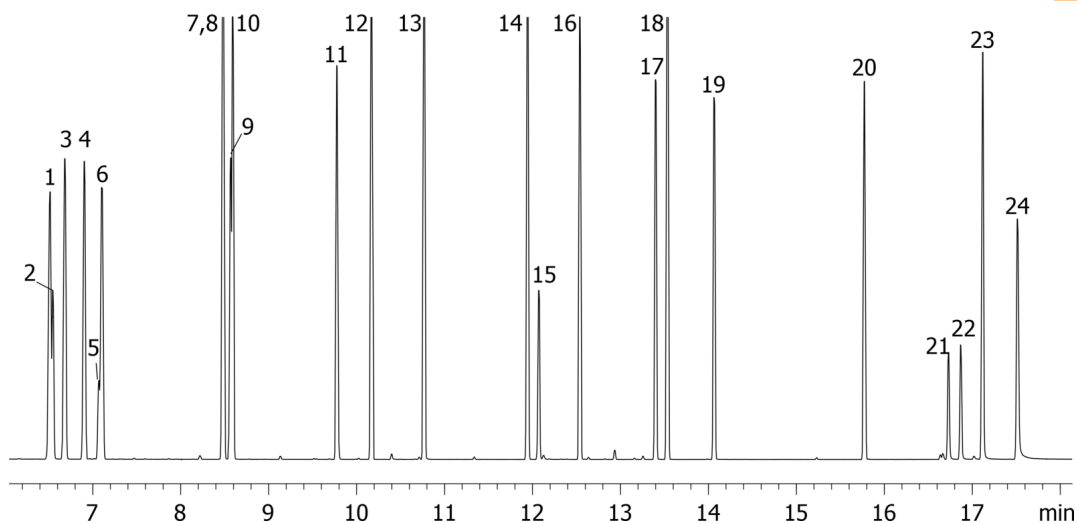
Analyst Note: Analytes are 50ppm in Dichloromethane



Products used in this application:



16520



Chlorinated compounds on ZB-MR2

ANALYTES:

- 1 1,2-Dichlorobenzene
- 2 bis(2-Chloroethyl)ether
- 3 1,4-Dichlorobenzene
- 4 1,3-Dichlorobenzene
- 5 bis(2-Chloroisopropyl)ether
- 6 Hexachloroethane
- 7 bis(2-Chloroethoxy)methane
- 8 Hexachlorobutadiene
- 9 Hexachloropropene
- 10 1,2,4-Trichlorobenzene
- 11 Hexachlorocyclopentadiene
- 12 1,2,4,5-Tetrachlorobenzene
- 13 2-Chloronaphthalene
- 14 Pentachlorobenzene
- 15 1,3-Dinitrobenzene
- 16 4-Chlorophenylphenylether
- 17 4-Bromophenyl phenyl ether
- 18 Hexachlorobenzene
- 19 Pentachloronitrobenzene
- 20 Isodrin
- 21 Aramite
- 22 Aramite
- 23 Chlorobenzilate
- 24 Kepone

