

# GC Application

ID No.: 16521

## Benzene derivatives on ZB-MR2

**Column:** Zebtron™ ZB-MultiResidue™-2, GC Cap. Column 30 m x 0.25 mm x 0.20 μm, Ea

**Phase:** Proprietary Pesticides Phase

**Dimensions:** 30 meters x 0.25 mm x 0.2 μm

**Order No:** 7HG-G017-10

**Oven Profile:** 40 °C for 2 min to 260 °C @ 15 °C/min to 280 °C @ 8 °C/min for 3 min to 320 °C @ 15 °C/min for 5 min.

**Carrier Gas:** Constant Flow Helium, 1.5 mL/min

**Injection:** Splitless :1 1 μL @ 240°C

**Detection:** Mass Selective (MSD) (320°C)

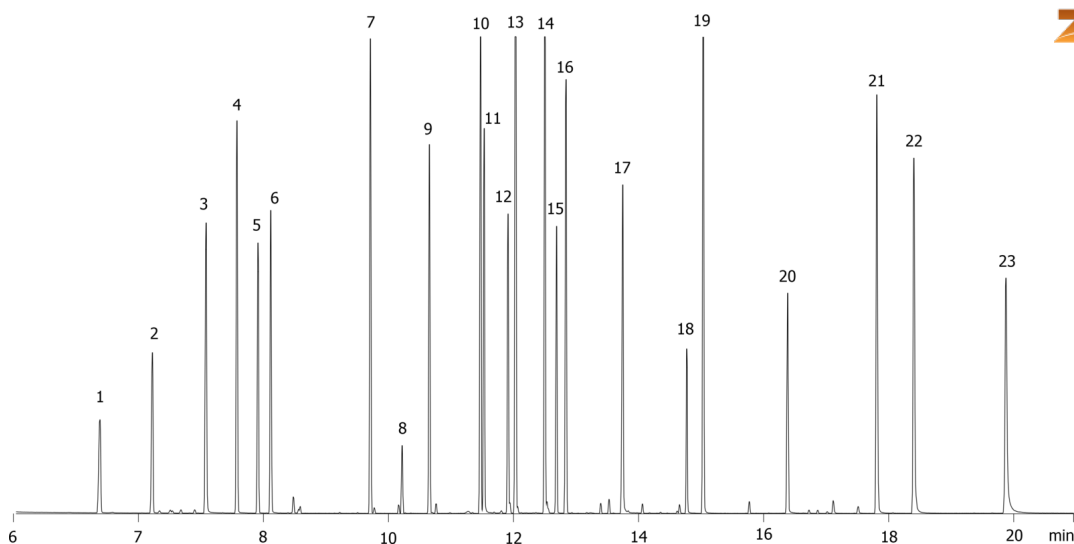
**Analyst Note:** Analytes are 50ppm in Dichloromethane



Products used in this application:



16521



## Benzene derivatives on ZB-MR2

### ANALYTES:

- 1 Methyl methane sulfonate
- 2 Ethyl methane sulfonate
- 3 Benzyl alcohol
- 4 Acetophenone
- 5 Nitrobenzene
- 6 Isophorone
- 7 Safrole
- 8 Isosafrole
- 9 Isosafrole
- 10 1,4-Naphthoquinone
- 11 Dimethyl phthalate
- 12 2,6-Dinitrotoluene
- 13 Dibenzofuran
- 14 2,4-Dinitrotoluene
- 15 Diethyl phthalate
- 16 Azobenzene
- 17 1,3,5-Trinitrobenzene
- 18 Phenacetin
- 19 Dibutyl phthalate
- 20 4-Nitroquinoline-1-oxide
- 21 Butyl benzyl phthalate
- 22 bis(2-Ethylhexyl)phthalate
- 23 Di-n-octyl phthalate

