

GC Application

ID No.: 16522

Phenol mix on ZB-MR1

Column: Zebtron[™] ZB-MultiResidue[™]-1, GC Cap. Column 30 m x 0.25 mm x 0.25 μm, Ea

Phase: Proprietary Pesticides Phase

Dimensions: 30 meters x 0.25 mm x 0.25 μm

Order No: 7HG-G016-11

Oven Profile: 40°C for 2 min to 320°C @ 20°C/min for 5 min

Carrier Gas: Constant Flow Helium, 1 mL/min

Injection: Split 5:1 1 μL @ 240°C

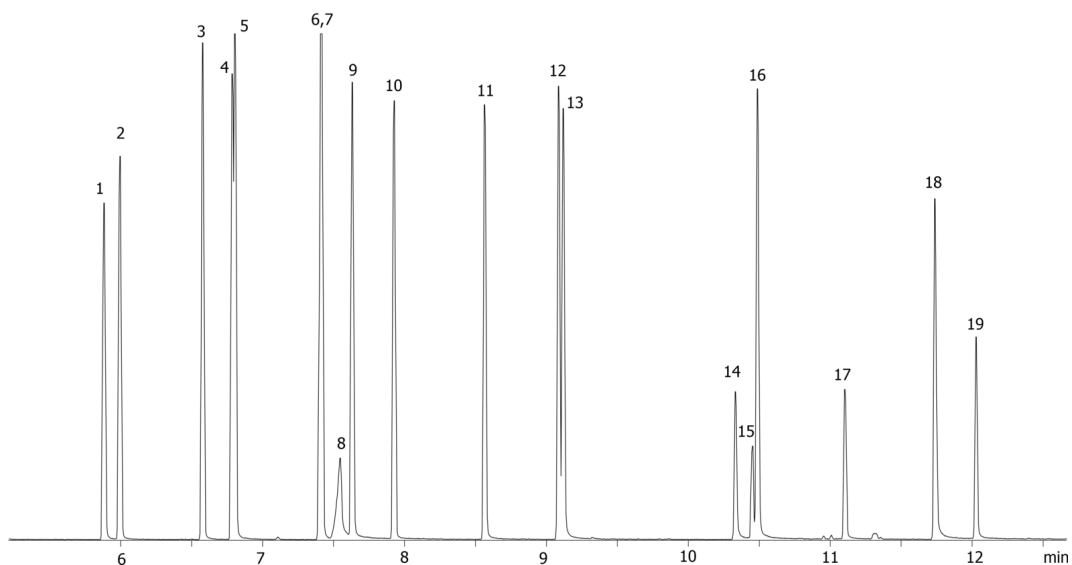
Detection: Mass Selective (MSD) (320°C)

Analyst Note: 25ppm 8270C phenol mix in Methylene chloride

16522



Products used in this application:



Phenol mix on ZB-MR1

ANALYTES:

- 1 Phenol
- 2 2-Chlorophenol
- 3 2-Methylphenol
- 4 4-Methylphenol
- 5 3-Methylphenol
- 6 2-Nitrophenol
- 7 2,4-Dimethylphenol
- 8 Benzoic acid
- 9 2,4-Dichlorophenol
- 10 2,6-Dichlorophenol
- 11 4-Chloro-3-methylphenol
- 12 2,4,6-Trichlorophenol
- 13 2,4,5-Trichlorophenol
- 14 4-Nitrophenol
- 15 2,4-Dinitrophenol
- 16 2,3,4,6-Tetrachlorophenol
- 17 2-Methyl-4,6-dinitrophenol
- 18 Pentachlorophenol
- 19 Dinoseb

