

# GC Application

ID No.: 16524

## Chlorinated compounds on ZB-MR1

**Column:** Zebron<sup>™</sup> ZB-MultiResidue<sup>™</sup>-1, GC Cap. Column 30 m x 0.25 mm x 0.25 μm, Ea

**Phase:** Proprietary Pesticides Phase

**Dimensions:** 30 meters x 0.25 mm x 0.25 μm

**Order No:** 7HG-G016-11

**Oven Profile:** 40°C for 2 min to 320°C @ 20°C/min for 5 min

**Carrier Gas:** Constant Flow Helium, 1 mL/min

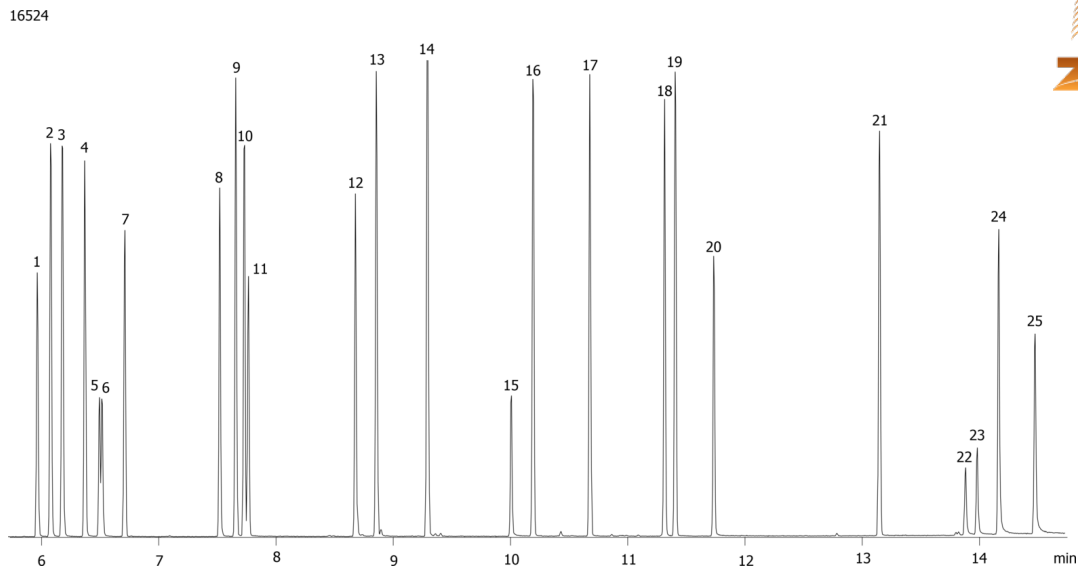
**Injection:** Split 5:1 1 μL @ 240°C

**Detection:** Mass Selective (MSD) (230°C)

**Analyst Note:** Analytes are 25ppm in methylene chloride.



Products used in this application:



## Chlorinated compounds on ZB-MR1

### ANALYTES:

- 1 bis(2-Chloroethyl)ether
- 2 1,2-Dichlorobenzene
- 3 1,4-Dichlorobenzene
- 4 1,3-Dichlorobenzene
- 5 bis(2-Chloroisopropyl)ether
- 6 bis(2-Chloroisopropyl)ether
- 7 Hexachloroethane
- 8 bis(2-Chloroethoxy)methane
- 9 1,2,4-Trichlorobenzene
- 10 Hexachlorobutadiene
- 11 Hexachloropropene
- 12 Hexachlorocyclopentadiene
- 13 1,2,4,5-Tetrachlorobenzene
- 14 2-Chloronaphthalene
- 15 1,3-Dinitrobenzene
- 16 Pentachlorobenzene
- 17 4-Chlorophenylphenylether
- 18 4-Bromophenyl phenyl ether
- 19 Hexachlorobenzene
- 20 Pentachloronitrobenzene
- 21 Isodrin
- 22 Aramite
- 23 Aramite
- 24 Chlorobenzilate
- 25 Kepone

