

# GC Application

ID No.: 16526

## PAH mix on ZB-MR1

**Column:** Zebtron™ ZB-MultiResidue™-1, GC Cap. Column 30 m x 0.25 mm x 0.25 μm, Ea

**Phase:** Proprietary Pesticides Phase

**Dimensions:** 30 meters x 0.25 mm x 0.25 μm

**Order No:** 7HG-G016-11

**Oven Profile:** 100°C to 260°C @ 15°C/min to 280°C @ 8°C/min to 320 °C @ 15 °C/min for 5 min

**Carrier Gas:** Constant Flow Helium, 1.2 mL/min

**Injection:** Splitless :1 1 μL @ 240°C

**Detection:** Mass Selective (MSD) (230°C)

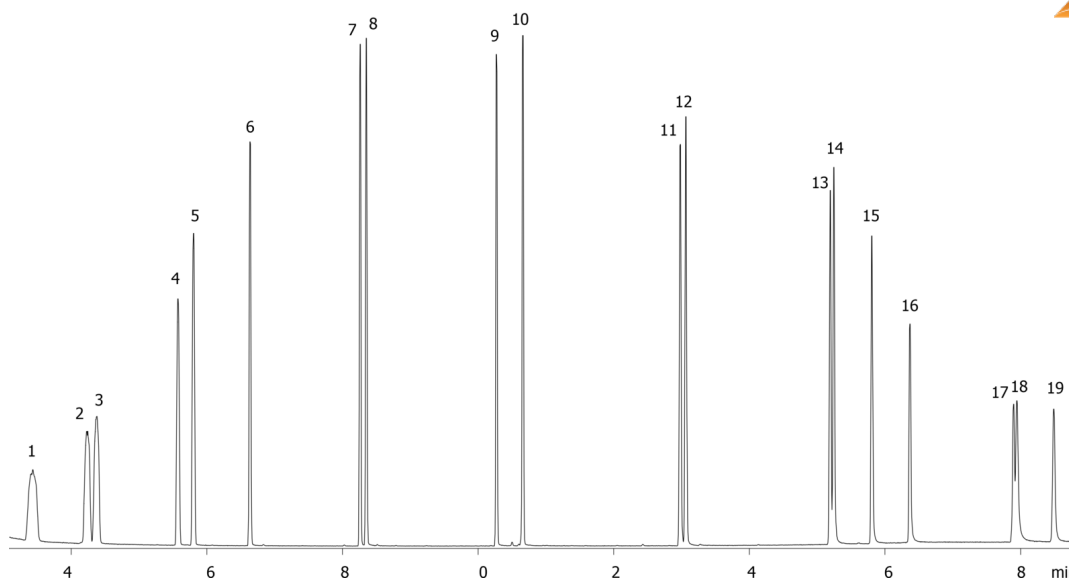
**Analyst Note:** 20ppm PAH mix in isooctane.



Products used in this application:



16526



## PAH mix on ZB-MR1

### ANALYTES:

- 1 Naphthalene
- 2 2-Methylnaphthalene
- 3 1-Methylnaphthalene
- 4 Acenaphthylene
- 5 Acenaphthene
- 6 Fluorene
- 7 Phenanthrene
- 8 Anthracene
- 9 Fluoranthene
- 10 Pyrene
- 11 Chrysene
- 12 Benz[a]anthracene
- 13 Benzo[b]fluoranthene
- 14 Benzo[k]fluoranthene
- 15 Benzo[a]pyrene
- 16 3-Methylcholanthrene
- 17 Indeno[1,2,3-cd]pyrene
- 18 Dibenz[a,h]anthracene
- 19 Benzo[g,h,i]perylene

