

## Opiates expanded run by MSD on a ZB-XLB

**Column:** Zebtron™ ZB-XLB, GC Cap. Column 30 m x 0.25 mm x 0.25 µm, Ea  
**Phase:** Proprietary XLB Phase  
**Dimensions:** 30 meters x 0.25 mm x 0.25 µm  
**Order No:** 7HG-G019-11  
**Oven Profile:** 170 °C for 0.5 min to 340 °C @ 15 °C/min.

**Carrier Gas:** Constant Flow Helium, 1.5 mL/min

**Injection:** Splitless 5:1 1 µL @ 250°C

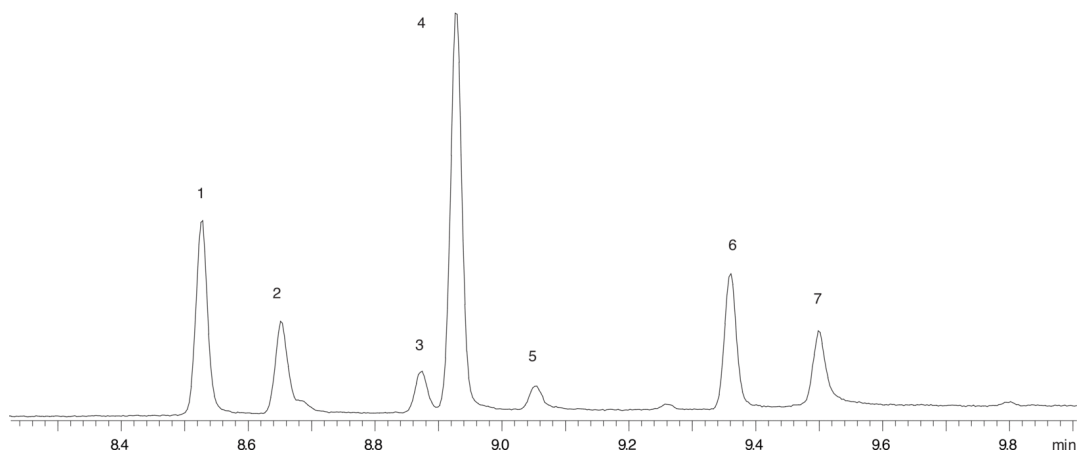
**Detection:** Mass Selective (MSD) (340°C)

**Analyst Note:** Analytes are 1ppm in methanol

Sim ions:

(Quant ion\*) Codeine (\*299,229,162): Norcodeine (\*285,215,148): Morphine (\*285,215,162): Hydrocodone (\*299,242,185): Hydromorphone (\*285,229,96): Oxycodone (\*315,230,215): Oxymorphone (\*301,216,140)

16554



### ANALYTES:

- 1 Codeine
- 2 Norcodeine
- 3 Morphine
- 4 Hydrocodone
- 5 Hydromorphone
- 6 Oxycodone
- 7 Oxymorphone



Products used in this application:

