

GC Application

ID No.: 16558

Endocrine disruptors by MSD on ZB-5MSi

Column: Zebtron™ ZB-5MSi, GC Cap. Column 30 m x 0.25 mm x 0.25 μm, Ea

Phase: 5% Phenyl 95% Dimethylpolysiloxane

Dimensions: 30 meters x 0.25 mm x 0.25 μm

Order No: 7HG-G018-11

Oven Profile: 100 °C to 180 °C @ 5 °C/min to 320 °C @ 15 °C/min.

Carrier Gas: Constant Flow Helium, 1.2 mL/min

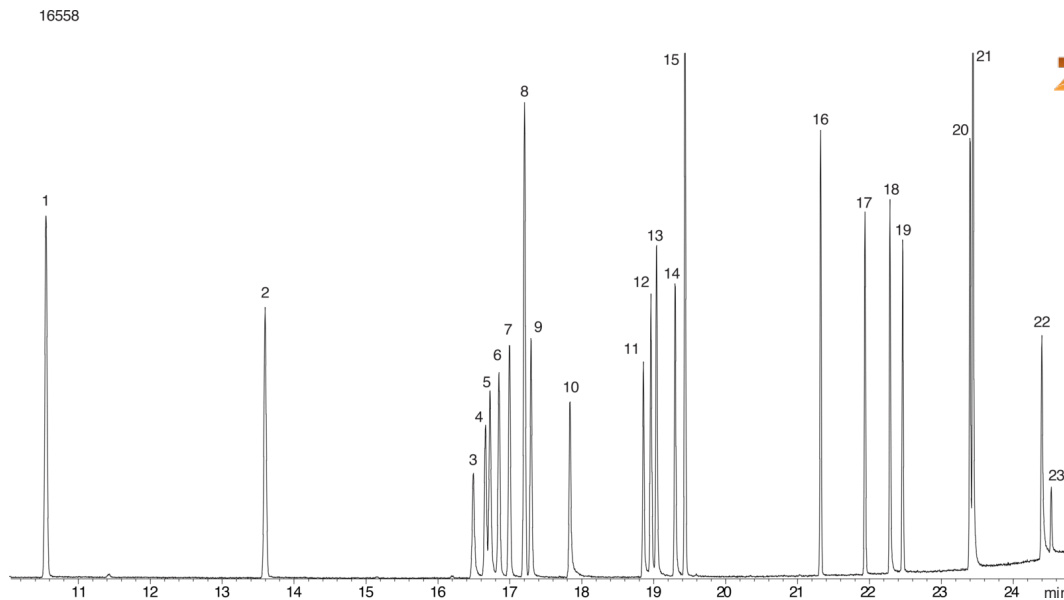
Injection: Split 40:1 1 μL @ 250°C

Detection: Mass Selective (MSD) (180°C)

Analyst Note: Anaytes are 50ppm in Acetone



Products used in this application:



Endocrine disruptors by MSD on ZB-5MSi

ANALYTES:

- 1 Dimethyl phthalate
- 2 Diethyl phthalate
- 3 Atraton
- 4 Simazine
- 5 Prometon
- 6 Atrazine
- 7 Propazine
- 8 Dipropyl phthalate
- 9 Terbutylazine
- 10 Secbumetone
- 11 Simetryn
- 12 Ametryn
- 13 Prometryn
- 14 Terbutryn
- 15 Dibutyl phthalate
- 16 4,4'-DDE
- 17 4,4'-DDD
- 18 Di-n-hexyl phthalate
- 19 4,4'-DDT
- 20 Dicyclohexyl phthalate
- 21 bis(2-Ethylhexyl)phthalate
- 22 Di-n-octyl phthalate
- 23 Ethinyl estradiol

