

# GC Application

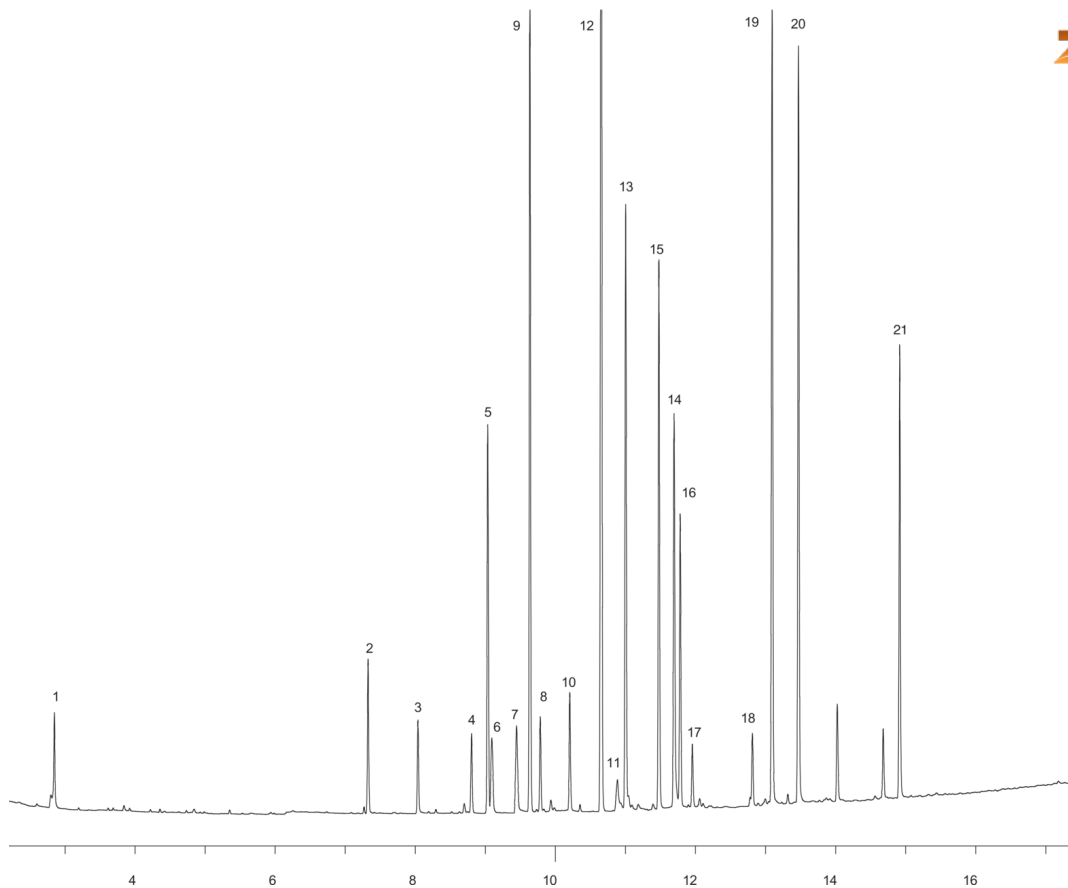
ID No.: 16562

## EPA 8151A on ZB-35 (Carrier Gas: Hydrogen)

**Column:** Zebron<sup>™</sup> ZB-35, GC Cap. Column 30 m x 0.32 mm x 0.25 µm, Ea  
**Phase:** 35% Phenyl 65% Dimethylpolysiloxane  
**Dimensions:** 30 meters x 0.32 mm x 0.25 µm  
**Order No:** 7HM-G003-11  
**Oven Profile:** 50 °C for 0.5 min to 100 °C @ 25 °C/min to 320 °C @ 12 °C/min for 2 min.

**Carrier Gas:** Constant Flow Hydrogen, 2.4 mL/min  
**Injection:** Splitless :1 1 µL @ 250°C  
**Detection:** Electron Capture (ECD) (300°C)  
**Analyst Note:** Analyses at 0.5 ppm in Methanol

16562



Products used in this application:



## EPA 8151A on ZB-35 (Carrier Gas: Hydrogen)

### ANALYTES:

- 1 Dalapon
- 2 3,5-Dichlorobenzoic acid
- 3 4-Nitrophenol
- 4 DCAA
- 5 Dicamba
- 6 MCPP
- 7 MCPA
- 8 Dichloroprop
- 9 DBOB
- 10 2,4-D
- 11 contaminant
- 12 Pentachlorophenol
- 13 Silvex
- 14 Chloramben
- 15 2,4,5-T
- 16 Dinoseb
- 17 2,4-DB
- 18 Bentazon
- 19 Picloram
- 20 Dacthal
- 21 Acifluorfen

