

GC Application

ID No.: 16571

EPA 552.2 on ZB-XLB (Carrier Gas: Hydrogen)

Column: Zebtron[™] ZB-XLB, GC Cap. Column 30 m x 0.32 mm x 0.25 µm, Ea

Phase: Proprietary XLB Phase

Dimensions: 30 meters x 0.32 mm x 0.25 µm

Order No: 7HM-G019-11

Oven Profile: 40 °C to 80 °C @ 12 °C/min for 4 min to 225 °C @ 30 °C/min.

Carrier Gas: Constant Flow Hydrogen, 2 mL/min

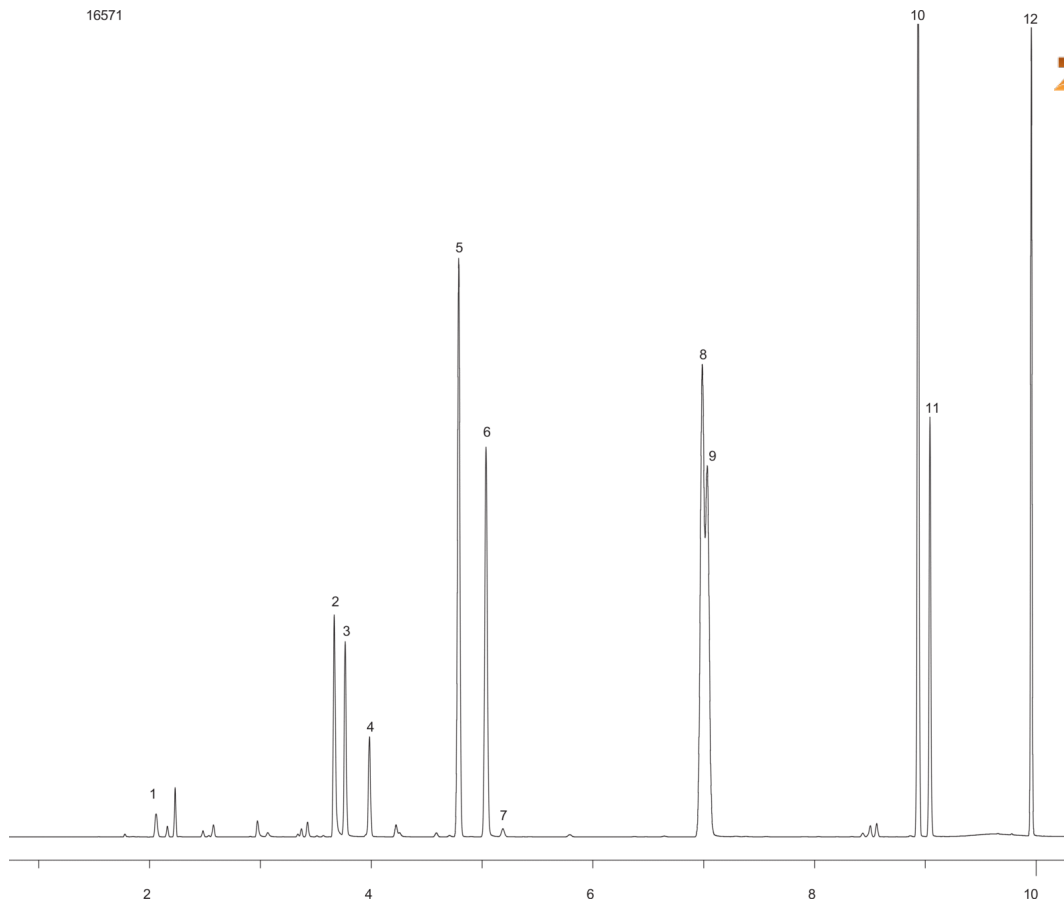
Injection: Splitless :1 1 µL @ 250°C

Detection: Electron Capture (ECD) (250°C)

Analyst Note: Standard concentration mix 0.5 ppm



Products used in this application:



EPA 552.2 on ZB-XLB (Carrier Gas: Hydrogen)

ANALYTES:

- 1 Chloroacetic acid
- 2 Bromoacetic acid
- 3 Dichloroacetic acid
- 4 Dalapon
- 5 Trichloroacetic acid
- 6 Bromochloroacetic acid
- 7 1,2,3-Trichloropropane
- 8 Bromodichloroacetic acid
- 9 Dibromoacetic acid
- 10 Chlorodibromoacetic acid
- 11 2,3-Dibromopropionic acid
- 12 Tribromoacetic acid

