

# GC Application

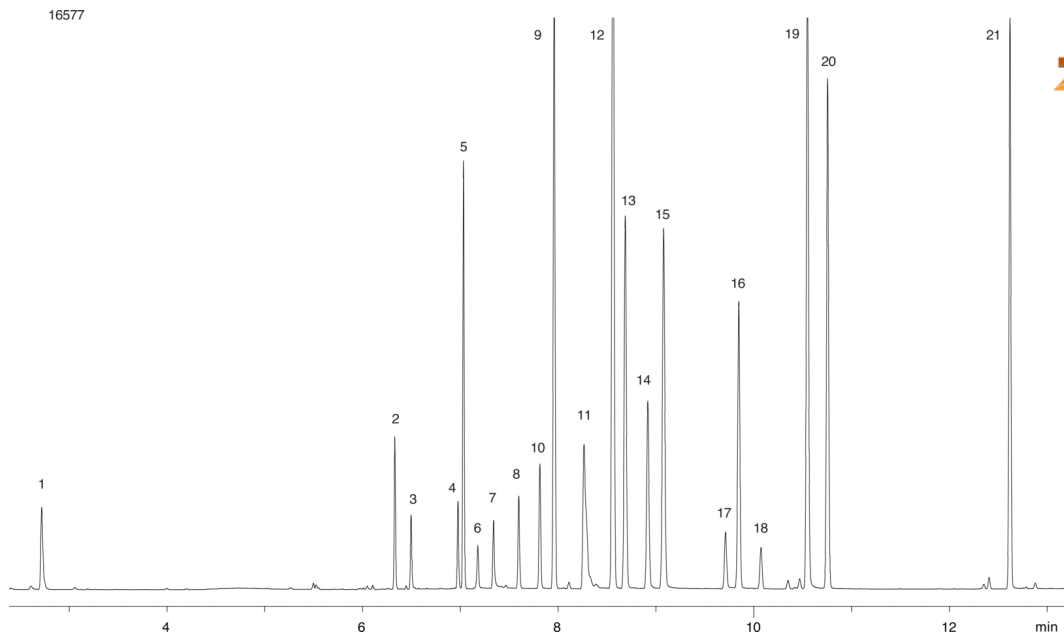
ID No.: 16577

## EPA 8151A on ZB-XLB (Carrier Gas: Helium)

**Column:** Zebron<sup>™</sup> ZB-XLB, GC Cap. Column 30 m x 0.32 mm x 0.25 µm, Ea  
**Phase:** Proprietary XLB Phase  
**Dimensions:** 30 meters x 0.32 mm x 0.25 µm  
**Order No:** 7HM-G019-11  
**Oven Profile:** 50°C for 0.5 min to 100 °C @ 25 °C/min to 200°C @ 22 °C/min for 2 min to 320 °C @ 17 °C/min.  
**Carrier Gas:** Constant Flow Helium, 3 mL/min  
**Injection:** Splitless :1 1 µL @ 250°C  
**Detection:** Electron Capture (ECD) (335°C)  
**Analyst Note:** Analytes are 0.5 ppm in Hexane



Products used in this application:



## EPA 8151A on ZB-XLB (Carrier Gas: Helium)

### ANALYTES:

- 1 Dalapon
- 2 3,5-Dichlorobenzoic acid
- 3 4-Nitrophenol
- 4 DCAA
- 5 Dicamba
- 6 MCPP
- 7 MCPA
- 8 Dichloroprop
- 9 DBOB
- 10 2,4-D
- 11 contaminant
- 12 Pentachlorophenol
- 13 Silvex
- 14 Chloramben
- 15 2,4,5-T
- 16 Dinoseb
- 17 2,4-DB
- 18 Bentazon
- 19 Picloram
- 20 Dacthal
- 21 Acifluorfen

