

HPLC Application

ID No.: 16616

Mixtures of Acids, Neutrals and Bases in Potassium Phosphate pH 2.5 on Gemini-NX 5um C18

Column: Gemini[®] 5 μ m NX-C18 110 Å, LC Column 150 x 4.6 mm, Ea

Dimensions: 150 x 4.6 mm ID

Order No: 00F-4454-E0

Elution Type: Gradient

Eluent A: 20mM Potassium Phosphate pH2.5

Eluent B: Acetonitrile

Gradient Profile:	Step No.	Time (min)	Pct A	Pct B
	1	0	95	5
	2	8	20	80
	3	10	20	80
	4	10.1	95	5
	5	13	95	5

Flow Rate: 1.5 mL/min

Col. Temp.: ambient

Detection: UV-Vis Abs.-Variable Wave.(UV) @ 254 nm (ambient)

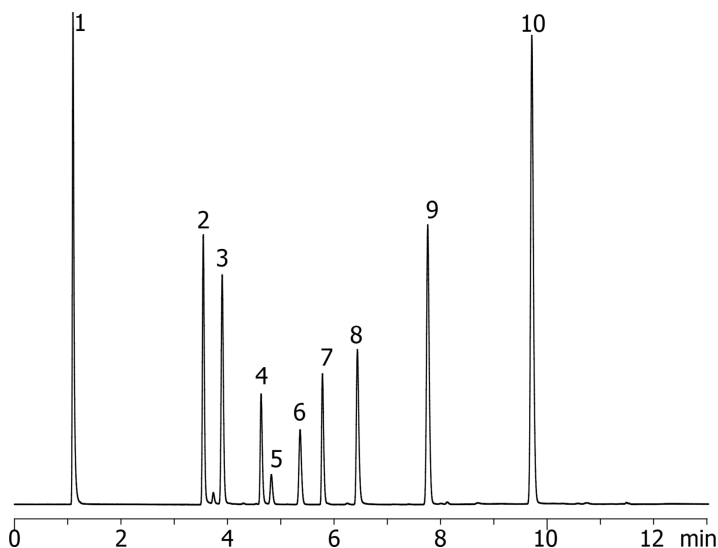
Analyst Note: SecurityGuard[™] Guard Cartridge System extends column lifetime.

- SecurityGuard Cartridges, C18 4 x 3.0mm, 10/Pk Part No.: AJ0-4287

- Holder Part No.: KJ0-4282



Products used in this application:



Mixtures of Acids, Neutrals and Bases in Potassium Phosphate pH 2.5 on Gemini-NX 5um C18

ANALYTES:

- 1 Pyridine
- 2 Quinidine
- 3 Sulfathiazole
- 4 Triprolidine
- 5 Benzyl alcohol
- 6 Phenol
- 7 Nortriptyline
- 8 3-Methyl-4-nitrobenzoic acid
- 9 Methyl salicylaldehyde
- 10 Hexanophenone

