

HPLC Application

ID No.: 16621

SFC - Polar Selectivity Mix on Luna NH2 250 x 4.6

Column: Luna® 5 µm NH2 100 Å, LC Column 250 x 4.6 mm, Ea

Dimensions: 250 x 4.6 mm ID

Order No: 00G-4378-E0

Elution Type: Gradient

Eluent A: Methanol

Eluent B: Carbon Dioxide

Gradient Profile:	Step No.	Time (min)	Pct A	Pct B
	1	0	5	95
	2	0.1	5	95
	3	5	50	50
	4	7	50	50

Flow Rate: 3 mL/min

Col. Temp.: 40 °C

Detection: UV-Vis Abs.-Fixed Wave. (UV) @ 254 nm (40 °C)

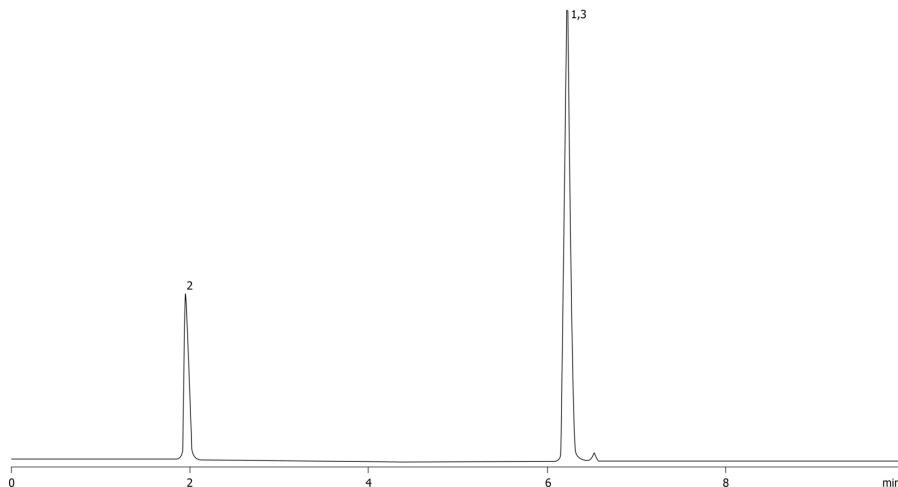
Detector Info: Thar Discovery Series, Super Pure SFC instrument provided courtesy of Thar Technologies

Analyst Note: SecurityGuard™ Guard Cartridge System extends column lifetime.

- SecurityGuard Cartridges, NH2 4 x 3.0mm, 10/Pk Part No.: AJ0-4302

- Holder Part No.: KJ0-4282

16621



ANALYTES:

- 1** Benzoic acid
Retention Time: 6.26 min
- 2** Caffeine
Retention Time: 1.95 min
- 3** Acetaminophen
Retention Time: 6.26 min



Products used in this application:

