

SFC - Achiral Selectivity Mix on Luna Silica(2) 250 x 4.6

Column: Luna® 5 µm Silica (2) 100 Å, LC Column 250 x 4.6 mm, Ea

Dimensions: 250 x 4.6 mm ID

Order No: 00G-4274-E0

Elution Type: Gradient

Eluent A: Methanol

Eluent B: Carbon Dioxide

Gradient Profile:	Step No.	Time (min)	Pct A	Pct B
	1	0	5	95
	2	0.1	5	95
	3	5	50	50
	4	7	50	50

Flow Rate: 3 mL/min

Col. Temp.: 40 °C

Detection: UV-Vis Abs.-Fixed Wave. (UV) @ 254 nm (40 °C)

Detector Info: Thar Discovery Series, Super Pure SFC instrument provided courtesy of Thar Technologies

Analyst Note: SecurityGuard™ Guard Cartridge System extends column lifetime.

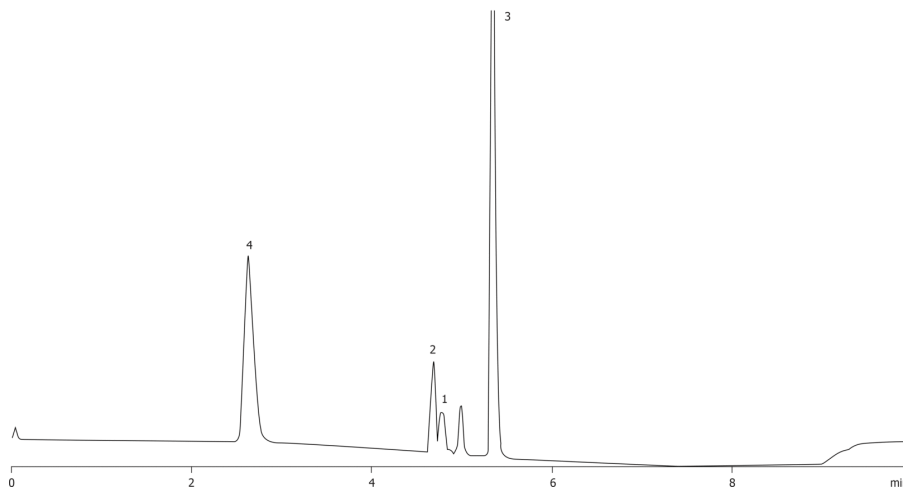
- SecurityGuard Cartridges, Silica 4 x 3.0mm, 10/Pk Part No.: AJ0-4348

- Holder Part No.: KJ0-4282

16622



Products used in this application:



ANALYTES:

- 1** Uracil
Retention Time: 4.8 min
- 2** Hydrocortisone
Retention Time: 4.69 min
- 3** Sulfanilamide
Retention Time: 5.36 min
- 4** Ethyl-2-methyl-3-indoleacetate
Retention Time: 2.63 min

