

## SFC - Achiral Selectivity Mix on Luna HILIC 250 x 4.6

**Column:** Luna® 5 µm HILIC 200 Å, LC Column 250 x 4.6 mm, Ea

**Dimensions:** 250 x 4.6 mm ID

**Order No:** 00G-4450-E0

**Elution Type:** Gradient

**Eluent A:** Methanol

**Eluent B:** Carbon Dioxide

Gradient Profile:	Step No.	Time (min)	Pct A	Pct B
	1	0	5	95
	2	0.1	5	95
	3	5	50	50
	4	7	50	50

**Flow Rate:** 3 mL/min

**Col. Temp.:** 40 °C

**Detection:** UV-Vis Abs.-Fixed Wave. (UV) @ 254 nm (40 °C)

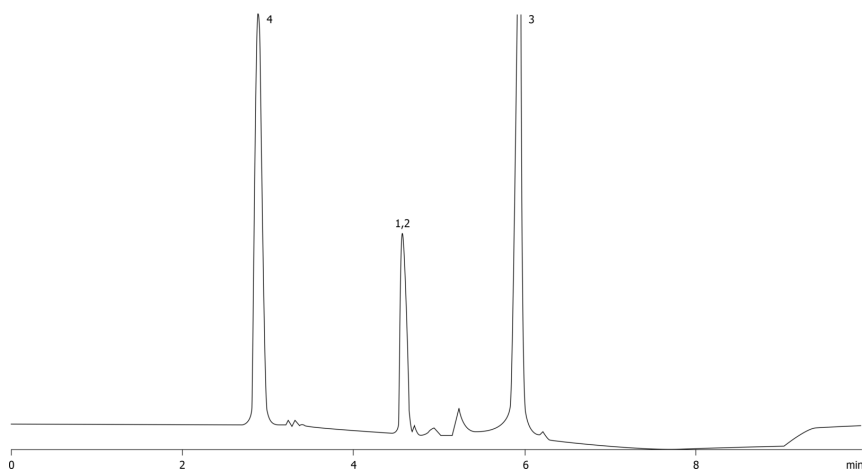
**Detector Info:** Thar Discovery Series, Super Pure SFC instrument provided courtesy of Thar Technologies

**Analyst Note:** SecurityGuard™ Guard Cartridge System extends column lifetime.

- SecurityGuard Cartridges, HILIC 4 x 3.0 mm, 10/Pk Part No.: AJ0-8329

- Holder Part No.: KJ0-4282

16623



### ANALYTES:

- 1** Uracil  
Retention Time: 4.57 min
- 2** Hydrocortisone  
Retention Time: 4.57 min
- 3** Sulfanilamide  
Retention Time: 5.96 min
- 4** Ethyl-2-methyl-3-indoleacetate  
Retention Time: 2.89 min



Products used in this application:

