

## Batch Reproducibility - Tricyclic Antidepressants in 20mM Potassium Phosphate pH 7 on Gemini-NX 5 $\mu$

**Column:** Gemini® 5  $\mu$ m NX-C18 110 Å, LC Column 150 x 4.6 mm, Ea

**Dimensions:** 150 x 4.6 mm ID

**Order No:** 00F-4454-E0

**Elution Type:** Gradient

**Eluent A:** 20mM Potassium Phosphate pH 7

**Eluent B:** Acetonitrile

Gradient Profile:	Step No.	Time (min)	Pct A	Pct B
	1	0	95	5
	2	10	20	80
	3	12	20	80

**Flow Rate:** 1.5 mL/min

**Col. Temp.:** ambient

**Detection:** UV-Vis Abs.-Variable Wave.(UV) @ 254 nm (ambient)

**Detector Info:** Batch 5561-74

**Analyst Note:** SecurityGuard™ Guard Cartridge System extends column lifetime.

- SecurityGuard Cartridges, C18 4 x 3.0mm, 10/Pk Part No.: AJ0-4287

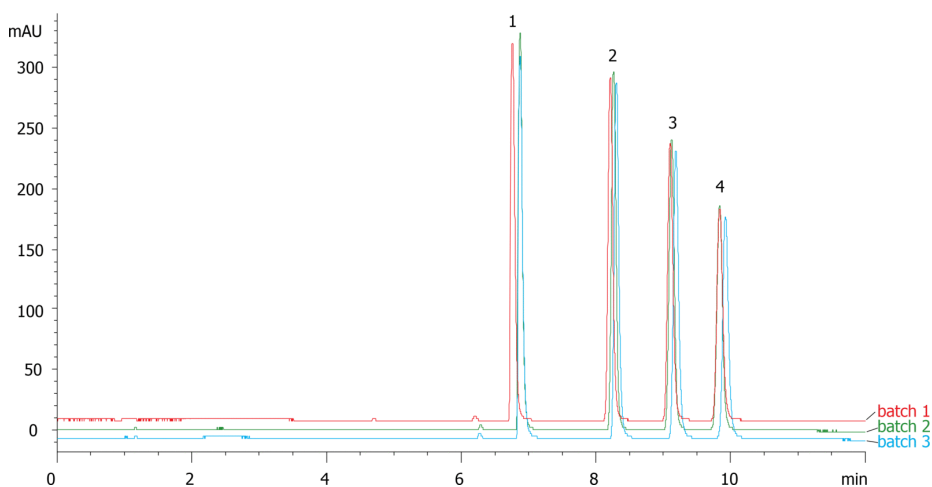
- Holder Part No.: KJ0-4282



Products used in this application:



16628



### ANALYTES:

- 1** Nortriptyline  
Retention Time: 6.875 min
- 2** Imipramine  
Retention Time: 8.265 min
- 3** Amitriptyline  
Retention Time: 9.125 min
- 4** Clomipramine  
Retention Time: 9.837 min

