

# HPLC Application

ID No.: 16643

## Yeast Prop. on Rezex ROA

**Column:** Rezex<sup>™</sup> ROA-Organic Acid H+ (8%), LC Column 300 x 7.8 mm, Ea

**Dimensions:** 300 x 7.8 mm ID

**Order No:** 00H-0138-K0

**Elution Type:** Isocratic

**Eluent A:** 0.005N Sulfuric Acid

Gradient	Step No.	Time (min)	Pct A
Profile:	1	0	100

**Flow Rate:** 0.6 mL/min

**Col. Temp.:** 60 °C

**Detection:** Refractive Index (RI) @ (40 °C)

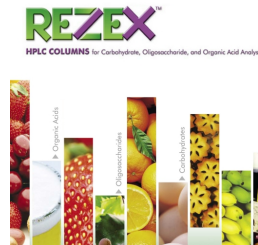
**Detector Info:** Shimadzu Prominence LC-20A System (LC-20AT pump, DGU-20A3 Membrane Degasser, SIL-20AC Autosampler, CTO-20A Column Oven, RID-10A Differential Refractive Index Detector, CBM-20A System Controller, Class-VP Chromatography Data System. SecurityGuard<sup>™</sup> Guard Cartridge System extends column lifetime.

**Analyst Note:**

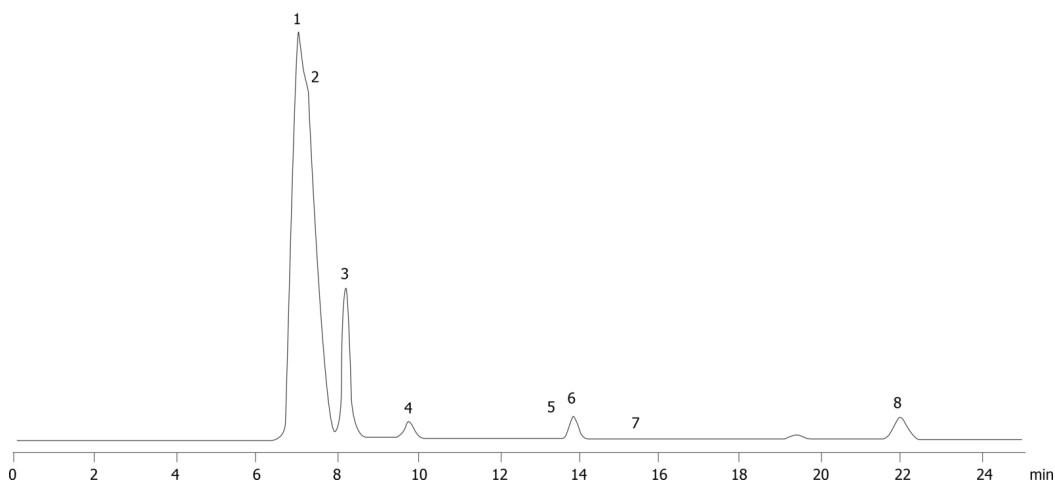
- SecurityGuard Cartridges, Carbo-H 4 x 3.0mm, 10/Pk Part No.: AJ0-4490

- Holder Part No.: KJ0-4282

16643



Products used in this application:



**ANALYTES:**

- 1 DP4+
- 2 DP3
- 3 Maltose
- 4 Glucose
- 5 Lactic acid
- 6 Glycerol
- 7 Acetic acid
- 8 Ethanol

