

HPLC Application

ID No.: 16649

BioEthanol 50HR Fermentation 12-46-50

Column: Rezex™ ROA-Organic Acid H+ (8%), LC Column 150 x 7.8 mm, Ea

Dimensions: 150 x 7.8 mm ID

Order No: 00F-0138-K0

Elution Type: Isocratic

Eluent A: 0.005N Sulfuric Acid

Gradient Profile:	Step No.	Time (min)	Pct A
	1	0	100

Flow Rate: 0.6 mL/min

Col. Temp.: 60 °C

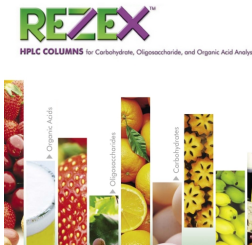
Detection: Refractive Index (RI) @ (40 °C)

Detector Info: Shimadzu Prominence LC-20A System (LC-20AT pump, DGU-20A3 Membrane Degasser, SIL-20AC Autosampler, CTO-20A Column Oven, RID-10A Differential Refractive Index Detector, CBM-20A System Controller, Class-VP Chromatography Data System SecurityGuard™ Guard Cartridge System extends column lifetime.)

Analyst Note:

- SecurityGuard Cartridges, Carbo-H 4 x 3.0mm, 10/Pk Part No.: AJ0-4490

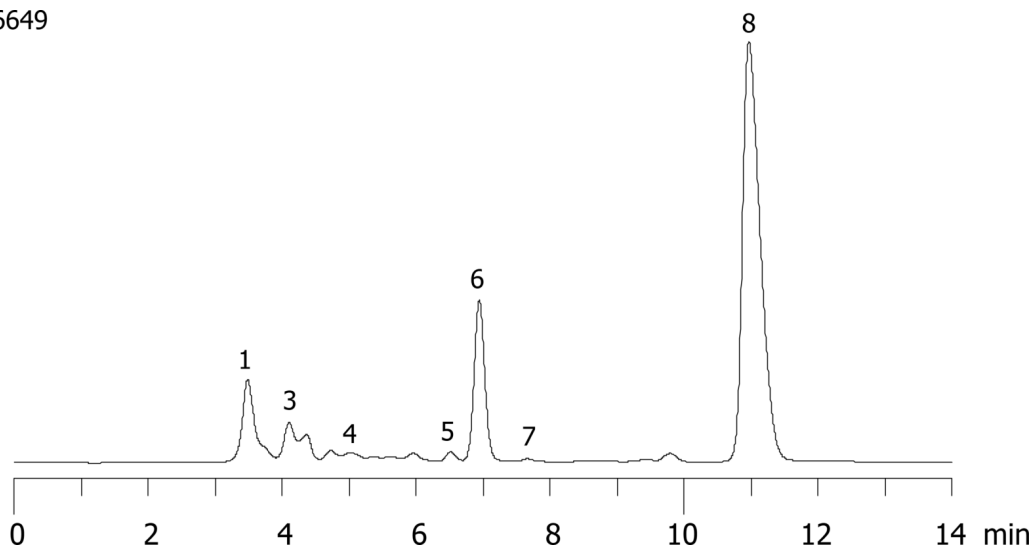
- Holder Part No.: KJ0-4282



Products used in this application:



16649



ANALYTES:

- 1** Dp4+
Retention Time: 3.5 min
- 2** Maltose
Retention Time: 4.1 min
- 3** Glucose
Retention Time: 4.9 min
- 4** Lactic acid
Retention Time: 6.5 min
- 5** Glycerol
Retention Time: 6.9 min
- 6** Acetic acid
Retention Time: 7.6 min
- 7** Ethanol
Retention Time: 11 min

