

BioEthanol Fermentation 39HRS 6-43-31

Column: Rezex™ ROA-Organic Acid H+ (8%), LC Column 300 x 7.8 mm, Ea

Dimensions: 300 x 7.8 mm ID

Order No: 00H-0138-K0

Elution Type: Isocratic

Eluent A: 0.005N Sulfuric Acid

Gradient	Step No.	Time (min)	Pct A
Profile:	1	0	100

Flow Rate: 0.6 mL/min

Col. Temp.: 60 °C

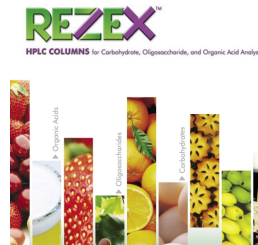
Detection: Refractive Index (RI) @ (40 °C)

Detector Info: Shimadzu Prominence LC-20A System (LC-20AT pump, DGU-20A3 Membrane Degasser, SIL-20AC Autosampler, CTO-20A Column Oven, RID-10A Differential Refractive Index Detector, CBM-20A System Controller, Class-VP Chromatography Data System SecurityGuard™ Guard Cartridge System extends column lifetime.

Analyst Note:

- SecurityGuard Cartridges, Carbo-H 4 x 3.0mm, 10/Pk Part No.: AJ0-4490

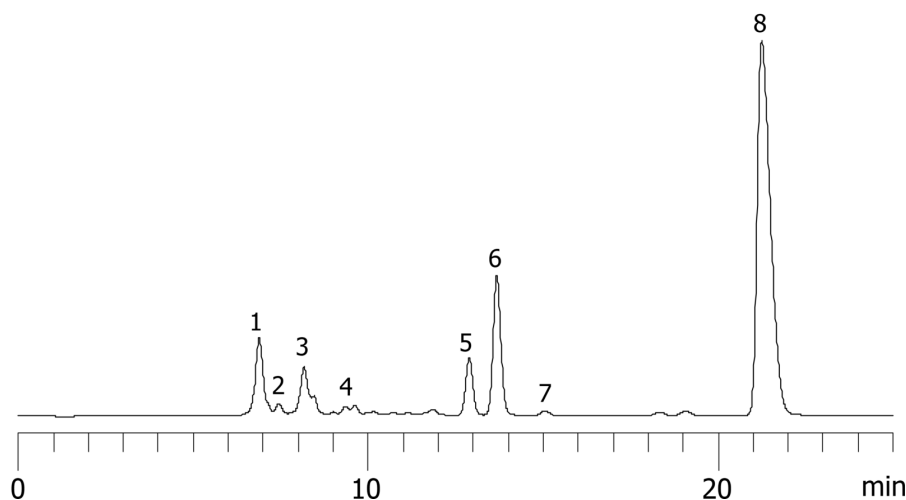
- Holder Part No.: KJ0-4282



Products used in this application:



16652



ANALYTES:

- 1** Dp4+
Retention Time: 6.8 min
- 2** Dp3
Retention Time: 7.5 min
- 3** Maltose
Retention Time: 8.2 min
- 4** Glucose
Retention Time: 9.7 min
- 5** Lactic acid
Retention Time: 12.9 min
- 6** Glycerol
Retention Time: 13.6 min
- 7** Acetic acid
Retention Time: 15 min
- 8** Ethanol
Retention Time: 21.2 min

