

## BioEthanol "Drop" Fermentation End 5-19-09

**Column:** Rezex™ ROA-Organic Acid H+ (8%), LC Column 300 x 7.8 mm, Ea

**Dimensions:** 300 x 7.8 mm ID

**Order No:** 00H-0138-K0

**Elution Type:** Isocratic

**Eluent A:** 0.005N Sulfuric Acid

Gradient Profile:	Step No.	Time (min)	Pct A
	1	0	100

**Flow Rate:** 0.6 mL/min

**Col. Temp.:** 60 °C

**Detection:** Refractive Index (RI) @ (40 °C)

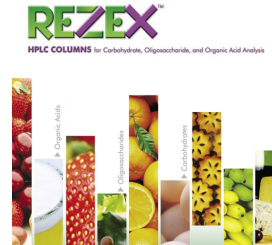
**Detector Info:** Shimadzu Prominence LC-20A System (LC-20AT pump, DGU-20A3 Membrane Degasser, SIL-20AC Autosampler, CTO-20A Column Oven, RID-10A Differential Refractive Index Detector, CBM-20A System Controller, Class-VP Chromatography Data System SecurityGuard™ Guard Cartridge System extends column lifetime.

**Analyst Note:**

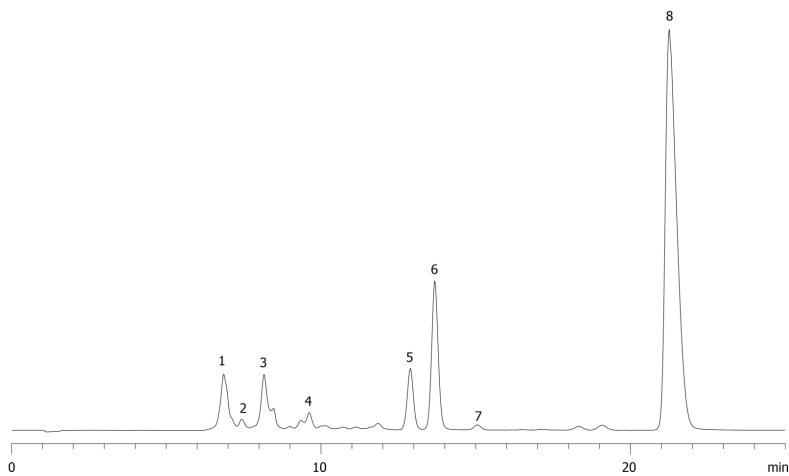
- SecurityGuard Cartridges, Carbo-H 4 x 3.0mm, 10/Pk Part No.: AJ0-4490

- Holder Part No.: KJ0-4282

16653



Products used in this application:



### ANALYTES:

- |          |             |                          |
|----------|-------------|--------------------------|
| <b>1</b> | Dp4+        | Retention Time: 6.9 min  |
| <b>2</b> | Dp3         | Retention Time: 7.4 min  |
| <b>3</b> | Maltose     | Retention Time: 8.2 min  |
| <b>4</b> | Glucose     | Retention Time: 9.7 min  |
| <b>5</b> | Lactic acid | Retention Time: 12.8 min |
| <b>6</b> | Glycerol    | Retention Time: 13.7 min |
| <b>7</b> | Acetic acid | Retention Time: 15 min   |
| <b>8</b> | Ethanol     | Retention Time: 21.2 min |

