

GC Application

ID No.: 16656

Rose Oil by MSD (Gooseneck liner) on ZB-XLB

Column: Zebtron[™] ZB-XLB, GC Cap. Column 30 m x 0.25 mm x 0.25 µm, Ea

Phase: Proprietary XLB Phase

Dimensions: 30 meters x 0.25 mm x 0.25 µm

Order No: 7HG-G019-11

Oven Profile: 50°C to 340°C @ 10°C/min for 10 min

Carrier Gas: Constant Flow Helium, 1.2 mL/min

Injection: Split 25:1 1 µL @ 250°C

Detection: Mass Selective (MSD) (230°C)

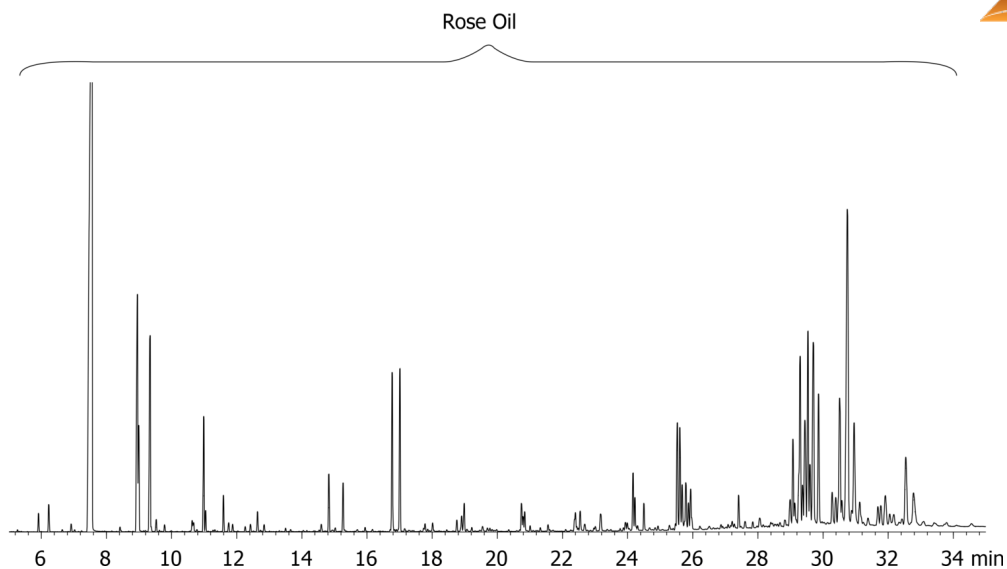
Analyst Note: Sample is 1% Rose oil in ethyl acetate



Products used in this application:



16656



ANALYTES:

- 1 Rose oil

