

GC Application

ID No.: 16657

Bioethanol by MSD on a ZB-1

Column: Zebron[™] ZB-1, GC Cap. Column 100 m x 0.25 mm x 0.50 μm, Ea

Phase: 100% Dimethylpolysiloxane

Dimensions: 100 meters x 0.25 mm x 0.5 μm

Order No: 7MG-G001-17

Oven Profile: 35°C for 12 min to 250°C @ 30°C/min for 19 min

Carrier Gas: Constant Flow Helium, 24 cm/sec

Injection: Split 200:1 0.1 μL @ 300°C

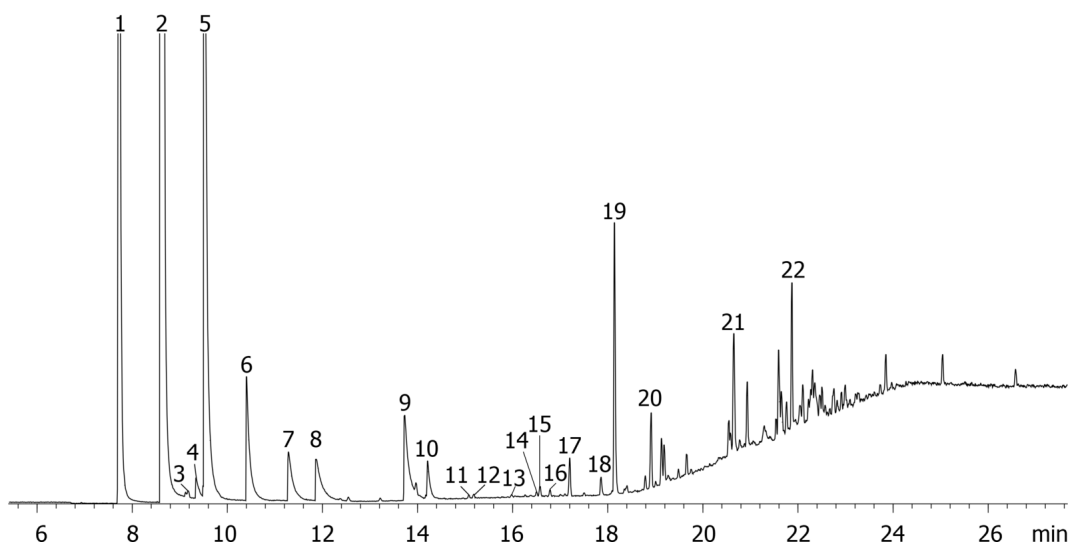
Detection: Mass Selective (MSD) (230°C)

Analyst Note: Ethanol ~95%, Methanol ~2%, Gasoline ~2%, Fusel Alcohols ~1%

16657



Products used in this application:



Bioethanol by MSD on a ZB-1

ANALYTES:

- 1 Methanol
- 2 Ethanol
- 3 Acrolein
- 4 Acetone
- 5 Isopropyl alcohol
- 6 t-Butanol
- 7 Allyl alcohol
- 8 n-Propanol
- 9 2-Butanol
- 10 Ethyl acetate
- 11 Methylcyclopentane
- 12 2,4-Dimethylpentane
- 13 Benzene
- 14 Cyclohexane
- 15 2,3-Dimethylpentane
- 16 3-Methylhexane
- 17 2,2,4-Trimethylpentane
- 18 Heptane
- 19 Acetal
- 20 Toluene
- 21 Xylene
- 22 Trimethylbenzene

