

Particle Size Comparisons - Jupiter 300 5µm (cf. App IDs 16660 and 16661)

Column: Jupiter® 5 µm C18 300 Å, LC Column 250 x 4.6 mm, Ea

Dimensions: 250 x 4.6 mm ID

Order No: 00G-4053-E0

Elution Type: Gradient

Eluent A: 0.1% TFA in Water

Eluent B: 0.1% TFA in Acetonitrile

Gradient Profile:	Step No.	Time (min)	Pct A	Pct B
	1	0	75	25
	2	15	45	55

Flow Rate: 1 mL/min

Col. Temp.: ambient

Detection: UV-Vis Abs.-Variable Wave.(UV) @ 220 nm (ambient)

Analyst Note: SecurityGuard™ Guard Cartridge System extends column lifetime.

- SecurityGuard Cartridges, Widedpore C18 4 x 3.0mm, 10/Pk Part No.: AJ0-4321

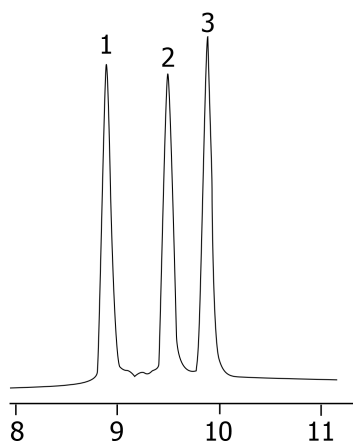
- Holder Part No.: KJ0-4282



Products used in this application:



16659



ANALYTES:

- 1 Equine Cytochrome c
- 2 Bovine Cytochrome c
- 3 Canine Cytochrome c

