

# HPLC Application

ID No.: 16660

## Particle Size Comparisons - Jupiter 300 10 $\mu$ m (cf. App IDs 16659 and 16661)

**Column:** Jupiter<sup>®</sup> 10  $\mu$ m C18 300 Å, LC Column 250 x 4.6 mm, Ea

**Dimensions:** 250 x 4.6 mm ID

**Order No:** 00G-4055-E0

**Elution Type:** Gradient

**Eluent A:** 0.1% TFA in Water

**Eluent B:** 0.1% TFA in Acetonitrile

Gradient Profile:	Step No.	Time (min)	Pct A	Pct B
	1	0	75	25
	2	15	45	55

**Flow Rate:** 1 mL/min

**Col. Temp.:** ambient

**Detection:** UV-Vis Abs.-Variable Wave.(UV) @ 220 nm (ambient)

**Analyst Note:** SecurityGuard<sup>™</sup> Guard Cartridge System extends column lifetime.

- SecurityGuard Cartridges, Widepore C18 4 x 3.0mm, 10/Pk Part No.: AJ0-4321

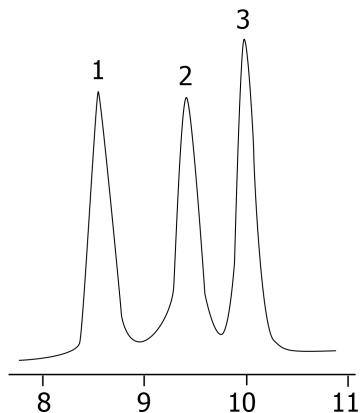
- Holder Part No.: KJ0-4282



Products used in this application:



16660



### ANALYTES:

- 1 Equine Cytochrome c
- 2 Bovine Cytochrome c
- 3 Canine Cytochrome c

